



PARKINSON'S NSW INC ANNUAL REPORT 2010



PARKINSON'S DISEASE IN BRIEF

- A chronic progressive, incurable, complex, disabling neurological condition.
- The four key symptoms are tremor, rigidity, akinesia/ bradykinesia and postural instability, with many secondary symptoms.
- Over 80,000 Australians have been diagnosed with Parkinson's disease.
- 10% of those diagnosed will be under the age of 40.
- Parkinson's disease is more prevalent than prostate, ovarian or cervical cancer or leukemia
- 1 in 5 people with Parkinson's disease are working age (15-64)
- Prevalence is increasing at around 2-3% pa

Parkinson's NSW Inc

Macquarie Hospital
Building 21
120 Coxs Road (Cnr Norton Rd)
North Ryde NSW 2113

Postal Address:

PO Box 71
NORTH RYDE BC
NSW 1670

Contact numbers:

InfoLine 1800 644 189
Reception 02 8875 8900
Fax 02 8875 8999

Website:

www.parkinsonsnsw.org.au
www.facebook.com/parkinsonsnsw
www.twitter.com/parkinsonsnsw

Cover:

Parkinson's NSW Unity Walk 2010
Designed by Lady B Designs

WHO WE ARE

WHO WE ARE

Parkinson's NSW Incorporated is a non-profit, community-based organisation established in 1979 to provide information, counselling and support to people living with Parkinson's disease.

We work in partnership with a network of support groups throughout the State.

We encourage research into Parkinson's disease and co-operate with those undertaking it.

We advocate on behalf of the Parkinson's community and strive to increase community awareness of the disease.

We look towards taking a leadership role in representing the Parkinson's community in New South Wales and Australia-wide.

OUR VISION

A community free of Parkinson's disease.

OUR MISSION

To enhance the quality of life to all people living with Parkinson's disease.

THE COUNCIL OF PARKINSON'S NSW INC.

President – John Silk OAM

Vice President – Chris Davis

Secretary – Peter McWilliam

Treasurer – Phillip Maundrell

Council Members

Allan Poole

Bernard McGrath

Bruce King OAM

Chris Wilson

Assoc Prof Kay Double

Rebecca Silk

Samuel Chu

Dr Simon Lewis

John Hassett

2010 PARKINSONS NSW VOLUNTEERS

Angela Turnbull

Dasia Black-Gutman

Judy Marshall

Karen Whitton

Lyn Smith

Paula Argyropoulos

Ross Jones

Sam Stevens

Sue Rance

Sue Rooleht

Walter Pearce

2010 PARKINSONS NSW STAFF

Miriam Dixon

Chris Searles

Claerwen Armstrong

Deborah England

Isabelle Clark

Julie Austin

Linda Luben

Marianna Sain

Michelle Skor

Pip Kuczerawy

Sallyanne Aarons

Susan Tait

Tracy Gough

Trish Morgan



PRESIDENT'S REPORT

The third annual Unity Walk saw some 1600 people converge on the Sydney Olympic Park on a fine Sunday in August. The outcome was a remarkably successful event that fulfilled two purposes: firstly, it highlighted the support that people with Parkinson's have within the community and secondly, the walk raised a significant amount of money to support research and services for PWP.

The annual Golf Day was also an outstanding success thanks to the support of many Public Companies as well as very generous private individuals. The organisation and attention to detail characterising these events, as well as the support of our membership, has ensured the continued success of both the Golf Day and the Unity Walk.

During the year we received a number of bequests of varying sizes; those bequests specified for research were placed into the Parkinson's NSW Foundation and the bequests donated for general use were directed to providing valuable services. The importance of such bequests to the on-going welfare of the organisation cannot be overstated. The bequests of recent years have provided major funds for research, as well as ensuring the stability of PNSW.

I'd like to discuss two other major highlights of the year. The first is our move to the new premises on the Macquarie Hospital campus. The State Government allowed us to move to this site, in conjunction with Alzheimer's NSW, on a peppercorn rent and with a long term lease. This not only represents a large cost saving over time for us but is also the first on-going commitment from the State Government to PNSW. Hopefully this is the beginning of a more 'visible' presence for us. While disruptive at the time, it has proven to be a successful move.

The second event was the establishment of the Neurological Nurse Trial in the Shoalhaven. This trial, funded by the Federal Government and a generous supporter of PNSW, is showing positive outcomes in its first six months. The Shoalhaven community has been right behind the trial, with the local Bendigo Bank supplying a car for the Nurse's use.

I am very pleased to report that the 2009/2010 year has been one of achievement. Our services have continued to expand, our projects have grown in number, and financially we have a surplus of funds that will take us into the next year in a strong position to achieve whatever plans the new Council may have.

During the year we were able to finance ten scholarships for the post-graduate course in Neurological Nursing at Notre Dame University. Through the generosity of the Sydney Pacific Lions Club, we now have the monies for a further five scholarships for the coming year. Additionally, we have funded four PhD top-up scholarships for high performing students working in Parkinson's related areas.

The Unity Walk researcher of the year was Professor Carolyn Sue. This remarkable woman's work with stem cells is an exciting area that will be keenly watched by the Parkinson's community. In all, we have been able to distribute \$185k to researchers in NSW. Research is an area close to the heart of all people with Parkinson's, and it is a priority of PNSW to encourage and fund research. Through the Parkinson's Foundation, an ongoing stream of funding is now established.

This year we have seen an expansion of staff, a move to new offices, and many more activities than in the past. I would like to acknowledge the hard work and dedication of Miriam Dixon our CEO and her staff, as well as the volunteers that back them up. I would also, at this time, like to acknowledge the efforts of the Council who have been a voice of strength behind all our decisions.

During the past 4 years as President of PNSW there is much to reflect on. Mostly, positive, occasionally not. Most important, has been the support that I have received from the membership – no matter what the challenges – you have never let me down. Without your support, the excitement, optimism and achievements within the organisation could never have happened.

I'd also like to note the assistance received from State and Federal Government which has helped us on various projects. In the future one can but hope that the 25,000 people living with Parkinson's in NSW will be further acknowledged by the government to assist our goals in providing for a better quality of life.

In handing on the Presidency, I am gratified that PNSW has become a sustainable and growing organisation which will continue to support us all.

This report will not be complete without acknowledging my wife and fellow councillor, Rebecca. Without her editorial, lateral thinking, and critical analysis skills, I could not have achieved many of the things which have happened over the last four years.

It has been a privilege to have been your President and I thank you, each and every one, for the opportunity.

John Silk OAM
President



John and Hon. Kristina Keneally at the office opening



CHIEF EXECUTIVE OFFICER'S REPORT

Over the last year, there has been a 32.5% increase in calls from health professionals, and a doubling of calls from newly diagnosed people.

Calls to InfoLine will sometimes be referred to our counselling service.

COUNSELLING SERVICE

Our Counselling Service is staffed by trained counsellors and they provide telephone and face to face counselling – this is often critical for those deeply concerned or in crisis. The diagnosis can sometimes trigger relationship and other issues, as independent individuals feel like they are losing control of their lives.

SUPPORT GROUPS

Our Support Groups provide an opportunity for people living with Parkinson's to share experiences, tips, mutual support and company. This is particularly important as previous work or leisure contacts can often cease as the illness progresses. We assist the Support Groups through a Support Group Co-ordinator and by providing resources and opportunities for Support Group Leaders to talk and swap notes. Over the last year, the number of Support Groups increased to 63, with new groups at Orange, San Remo and Snowy/Monaro. One of our events was a weekend away for young onset people living with Parkinson's, which included education sessions.

STAFF TRAINING FOR RESIDENTIAL CARE FACILITIES

This program aims to assist staff in nursing homes to care for people with Parkinson's. We are delighted that the Cecilia Kilkeary Foundation has agreed to renew its funding for 2010/11. This is an important program, as not all nursing home staff are familiar with the best practice for Parkinson's.

DASH TO THE INFOLINE

This program, which was launched with funding from the Commonwealth and the Perpetual Trustee Company, focuses on Depression, Anxiety, Sleep disorders and Hallucinations (together 'DASH'). There is continuing education available to GPs via our website. We also have a booklet on these symptoms for people living with Parkinson's.



Infoline – L-R: Julie Austin, Michelle Skor

To best understand what Parkinson's NSW is about, I would urge you to read the stories of Barry & Vivienne Ross and Margie Leyland, which appear in this Annual Report. Barry speaks of the devastation to his life following a diagnosis of Parkinson's at age 54. He also speaks of the enormous assistance provided by Parkinson's NSW including its counselling services.

Margie Leyland is the widow of Mike Leyland, one of the famous TV documentary producing Leyland Brothers who travelled all over the countryside. She talks about the importance of a support network both to Mike and to her as a carer.

There are over 25,000 people living with Parkinson's in New South Wales. Our role is to ease the burden of people living with Parkinson's disease, their partners, families and carers. I refer below to several ways in which we do that. We also seek to encourage research.

INFOLINE (1800 644 189)

People living with Parkinson's, their families and carers call our InfoLine to gain support and information. By way of example, we receive requests for advice and strategies to manage behavioural and physical challenges, enquiries about aids to help with specific problems, about exercise programs, genetic links, requests for referrals in relation to financial and other issues, work related concerns and emotional and relationship concerns. Often we are there for people who are concerned about their future or advancing symptoms. We talk to the carers as well as those with the diagnosis.

INFORMATION SEMINARS

We continue to be involved in seminars for people living with Parkinson's. Our 2010 Awareness Week seminar covered a variety of topics including the DASH symptoms and movement. This seminar concluded with a moving recount by Alex Dalglish, as part of her "racing the planet" walk, and her support for her father who has Parkinson's.

Over the last year we have also been involved in seminars on surgical interventions, deep brain stimulation, and Parkinson's Plus.

NEUROLOGICAL NURSE EDUCATOR

Parkinson's NSW has, for some years, been advocating the introduction of neurological nurse educators, a model that has been successful in the UK. We are delighted that in February 2010 we were able to launch a 2 year pilot project for Australia's first specialist neurological nurse educator, Marilia Pereira. The pilot is partly funded by the Commonwealth Government and a private benefactor. Bendigo Bank is also supporting the project, by providing a car and running costs. The project is based at the Nowra Community Health Centre and services the Shoalhaven area. Marilia provides a service to people living with Parkinson's Disease, Parkinson's Plus conditions and Motor Neurone Disease, their carers, families and the community, by implementing innovative and personalised patient care systems. We are hopeful that the success of this pilot project will lead to it being rolled out across Australia.



Hon. Carmel Tebbutt opening the 'Stepping Ahead Seminar'

RURAL AND REMOTE PROGRAM

This program was launched in 2009 and provides 6 hours of online education on Parkinson's, including information on diagnosis, symptoms, treatments and medications. The program was customised for GPs and allied health professionals in rural and remote areas, but is available to all GPs and allied health professionals throughout Australia.

AWARENESS AND ADVOCACY

Throughout the year, we have taken every opportunity to increase awareness of Parkinson's in the community, via media and direct representations to Government. These actions build on past activities to increase community awareness and understanding of Parkinson's. This is important in relieving discomfort for people living with Parkinson's and in securing better services.

GOVERNMENT ASSISTANCE

The last year has seen a significant increase in NSW Government assistance.

A combined lobbying effort by Parkinson's NSW and MS Australia resulted in a new energy rebate to assist people living with Parkinson's or MS to meet their energy bills.

The NSW State Government again provided free metropolitan transport for the Unity Walk and also expanded their support by providing free travel via CountryLink. This year the NSW Government also provided some funding for our Awareness Week activities.

The NSW Government has assisted further by providing premises at Macquarie Hospital for use as our offices, at a peppercorn rent.

I'm pleased to advise that Deputy Premier and Minister for Health, the Hon. Carmel Tebbutt and Peter Primrose, Minister for Ageing and Disability Services, have jointly announced \$68,000 in funding over 3 years to assist with education for people living with Parkinson's and their carers, and for Awareness Week activities. This recognition of the challenges faced by people living with Parkinson's is appreciated.

CHIEF EXECUTIVE OFFICER'S REPORT CONTINUED

RESEARCH

One of the important goals of Parkinson's NSW is to promote research. We seek to do this in the most effective way by inviting expressions of interest from researchers in NSW, and arranging for them to be evaluated by independent experts in the field, before selecting projects to support. This Report contains details of some of the recent research activities.

COMMUNICATION

We continue to provide information to our members through our newsletter, and our website. We have also introduced a Facebook page and are providing information via Twitter, to communicate with a wider audience. The contact details are at the beginning of this Report.

VOLUNTEERS

Our wonderful volunteers enrich the organisation by assisting the professional staff with our many tasks. I take this opportunity to thank all our volunteers, including those who lead or assist the support groups, and those who assist us in our head office and with special events such as the Unity Walk and Golf Day.

Our volunteers have, through our speakers group, support groups, and individual efforts, continued to raise awareness as well as raising funds for the organisation.

We continue to rely on volunteers to help achieve our goals with our limited resources.

We also find that volunteers can gain from their participation. For example, Sue Rance, our Tuesday office volunteer writes:

My husband Phil was diagnosed with PD in 1997 and it was about that time that we joined Parkinson's NSW. Back then I regularly phoned the information line, attended every seminar I could get to and we

generally took advantage of the many services on offer. After one seminar I visited the Parkinson's NSW office, which at the time was situated at Concord Hospital and thought how much I would like to work there on a voluntary basis once I had retired from permanent work. This I did in 2005 when I became the "Tuesday" volunteer!

I love working as a volunteer in the office for many reasons. It's the one day of the week when I am not a "carer" but am back in the workforce, back in an office situation, chatting and joking with the other girls and generally being part of the office team. There's a real feeling of being useful – of being able to give something back to PNSW for all the amazing help they have given to Phil and me over the years. I love answering the phone, opening and sorting the mail and I'm quite happy to sit and stuff envelopes or pack Christmas cards or any other little jobs that need doing!

As a volunteer for PNSW I have always felt very valued and appreciated, acknowledged and welcome. Everyone is very understanding of my situation as a carer and accept that I might need to leave early or won't manage to complete a task. I certainly hope that I will continue to be the "Tuesday" volunteer for a good while yet!

DONORS AND SPONSORS

We are particularly appreciative of the generosity and support of our donors and sponsors, who are essential in enabling us to provide our services. Their details are listed in this Report.

SPECIAL THANKS

I would like to thank our outgoing President, John Silk OAM, for his enormous dedication and enthusiasm for Parkinson's NSW over the last four and a half years, including taking our fundraising to a new level. I would also like to thank all the members of the Executive, the Council and our wonderful staff for their outstanding efforts and compassion, as we strive to improve the lives of people living with Parkinson's.



Miriam Dixon
CEO
September 2010



Opening new office – L-R: Miriam Dixon, John Silk OAM, Hon. Kristina Keneally, Paula Argy, Sue Rance, Hon. Peter Primrose.

BARRY ROSS

My name is Barry Ross, and I am 56 years old. December 2007 was when my life changed forever and, in the end – strangely – for the better.

I was a workaholic truck driver with very little time to spend with my wife of 20 years Vivienne, and our 6 children, and 10 grandchildren.

After shoulder surgery to repair ligament tears to both shoulders, my left arm did not respond as well as my Orthopaedic Specialist would have liked. He suggested that I see a Neurologist.

18 months on, and several Doctors and Professors later, the definitive diagnosis of Parkinson's Disease was like an electric shock. Devastation didn't even come close. Depression, anxiety, and the endless search for the magic cure left us shell-shocked. My symptoms could be tracked back to at least the year 2000. I could look back and see the gradual decline in my ability to work, think and generally function.

What to do? Surfing the internet put Parkinson's NSW on our radar. After a phone call to Parkinson's NSW Counselling Service and a wonderful conversation with a total stranger named Debbie England, our shattered lives slowly began to turn around.

We attended our first Seminar at Lawson, learned entirely too much information to digest at once, but the realisation that we were not alone was so comforting. We met Debbie England at that seminar, (she was giving one of her legendary counselling "pep" talks) and from there started private counselling sessions with her at the North Ryde office.



Barry and Vivienne Ross

Over the past couple of years, we have had regular sessions with Debbie, a little less often these days now that we are back on track, but we have no doubt that our counselling sessions with Debbie literally saved our lives. It sounds a bit dramatic – but when someone talks you back from the black hole of depression and hopelessness – we say this with all sincerity – life's good. Of course my medication manages my symptoms, but counselling manages our mindset, and Debbie has given us the tools to handle the daily challenges of living with Parkinson's.

We hate to think where we would be today without this wonderful help – and we would like to thank Parkinson's NSW for providing this essential service, and to Debbie in particular – well, she knows how we feel about her.

Barry and Vivienne Ross

FUNDRAISING

PARKINSON'S UNITY WALK 2010

Sydney's third Parkinson's Unity Walk was held on Sunday 29th August at Sydney Olympic Park under sunny winter skies. Participants enjoyed the carnival atmosphere, the entertainment, the kids' rides, the food and, of course, the Walk.

A month before registration closed, 1413 people had registered. Whilst this number was slightly down from last year, funds raised were already up by 5.03%. At the time of the event, total money raised was \$231,144 comprising of a record \$70,000 in corporate sponsorship, \$38,390 from registrations, \$9,852 in donations and \$103,000 in online walker sponsorship.

The new 3.6km course was a little more picturesque than in previous years. The Hills District Pipe Band led walkers away down Olympic Boulevard. Many walkers, and even some dogs, were wearing the colourful Unity Walk bandana or scarf. Some walkers carried banners or signs that read, "I'm walking for Mum", "I'm walking for Granddad" etc.

At the end of the Walk, participants were greeted by smiling Bendigo Bank volunteers who presented them with a Sydney Markets bag that contained fresh fruit and other goodies. The walkers then settled down to some great music, food and to generally 'veg out'.

Leone Harris, who was diagnosed with Parkinson's when in her 30s and has four children, was this year's Unity Walk Ambassador. Despite her Parkinson's, Leone has become an accomplished artist and her paintings have already featured in a number of art exhibitions.

2GB radio personality, Chris Smith, was at the Unity Walk with his young family. Former Penrith Panthers star, Brett Lobb, attended with a large family contingent of supporters. Many



who have felt the impact of Parkinson's, which affects 80,000 Australians, came along on this great day to show their support.

We are again indebted to all who participated especially those from the Parkinson's fraternity who continue to support our flagship event in great numbers, many coming from far away regional areas. The state government's free travel to and from the event was a great bonus especially for the country folk via Country Link. One of our sponsors, ACCOR Hotels, provided discounted accommodation for anyone who wanted to make it a Parkinson's Unity Walk weekend.

Individual fundraisers vied to raise the most funds and win a fantastic prize such as a holiday for two in Hawaii, Gold Class tickets on the Indian Pacific Railway or a fully catered corporate box to the opening night of 'Ben Hur' – The Arena Spectacular'. Money raised from the Unity Walk will go towards helping people with Parkinson's, their families and carers, as well as to research.

Thank you to all our wonderful sponsors, many of whom have been with us from the start. Our Presenting Sponsor, Bendigo Bank, continues to give us great support both financially and logistically through its staff volunteers. Hawaiian Airlines has provided great incentives to our supporters since Day One. ANZ Stadium gave us something as big as Ben Hur to get those fundraising teams competing; our own sort of fundraising chariot race! This year we welcomed Great Southern Railways on board; they are providing two Gold Service tickets on the Indian Pacific for the top fundraiser in each state. Boehringer Ingelheim provided the funding for the establishment of the first national Parkinson's Unity Walk website. This has been a huge success in driving fundraising, especially in the smaller states. Novartis once again sponsored the Unity Walk T shirts which are always a big hit. We also received great media support from 2GB & 2CH who entered teams to walk, with radio personality, Chris Smith, as the 2GB team's captain.

In terms of media exposure, we are extremely grateful to The Honourable Governor General of Australia, Ms Quentin Bryce AC, for recording a television commercial for the event. Thanks also to top Australian comedian, Vince Sorrenti, for recording our radio and television community service announcement. Unfortunately, the calling of a federal election at the start of our campaign impacted on the level of free air time we received but nonetheless we are indebted

to those television and radio networks that gave us support. Australian Senior.com provided over \$20,000 of free online advertising to help spread the word.

Thank you also to our other **Major Sponsors:** Hawaii Tourism, Outrigger Luana Waikiki.

Supporting Sponsors: Financial Management Solutions, AMP Foundation, The Trust Company, Artisse Organic.

Event Partners: Sydney Olympic Park Authority, Clubs NSW, Keno, Intouch Direct, Sydney Markets, ACCOR Hotel Sydney Olympic Park, The Pharmacy Guild of Australia, Battery World, Lions.

PARKINSON'S NSW GOLF CLASSIC

Our third, and most successful, corporate golf day was once again staged at the magnificent Monash Country Club. A record number of sponsors participated resulting in a record return of over \$100,000 for Parkinson's NSW. This result places the Parkinson's NSW Golf Classic in the upper echelon of corporate charity golf days in the country and this has been achieved in just three years. We would like to especially thank Mr Geoff Dixon for his support of the event. He has helped to achieve such a stunning result in only the event's third year. Our gratitude to David Samer for compiling arguably the greatest array of prizes ever seen at a charity golf day. Thank you to the management and staff of Monash Country Club who, whilst professional in their nature, go out of their way to ensure that our golf day is fun. Our thanks also to our Presenting Sponsor Sydney Markets which continues to support our event via its many corporate networks. Thanks to all of the following for their generous support:



Golf Day 2009 winners

Platinum Sponsors: Sydney Airports Corporation, Cromwell, Argyle Inn, Qantas, M & C Saatchi, Leighton Holdings, Canterbury Bulldogs, Banjo Media, Facilitate Digital, Rockpool/Vittoria Coffee.

Gold Sponsors: Sydney Markets

Silver Sponsors: Smartline Personal Mortgage Advisers, David Samer, Steve Zappia

And everyone else who participated.

DIRECT MAIL

Our two direct mail campaigns, the Tax and Christmas Appeals, are a very important component of our fundraising program. As a small charity, our fundraising activity is limited to just a few events and programs until we have extra resources to add programs. Until such time we are most grateful to all our donors for their continued support.

Fundraising income from the two appeals this year totalled \$53,737 for an outlay of \$6,189. This is a Return On Investment of a most pleasing 888%. This compares with \$56,112 for an outlay of \$7028, an ROI of 798% the previous year. Whilst the return on investment is exceptional, it underscores the importance of an acquisition strategy if Parkinson's is to continue growth in this area of fundraising. At present we are using the Unity Walk numbers as a no cost form of acquisition. Whilst it is cost effective, it is strategically untargeted.

BASEMENT BASH

On April 21, Macquarie Bank, with the help of Senior Macquarie Bank Executive Richard Shepherd and his band of staff rock gods, 'The Financial Instruments', staged a night of retro rock at one of Australia's iconic music venues, The Basement. The \$20,000 raised was shared between Parkinson's and Cure Cancer Australia. Each charity sourced its own supporters and, with an influx of Macquarie Bank staff, the 250 plus attendees turned The Basement into retro heaven. Parkinson's NSW thanks Richard Shepherd, Macquarie Bank, the Macquarie Bank Foundation and Julie White for thinking of the older rockers. We would also like to thank our own rock god Bernard McGrath, himself a person with Parkinson's, for his tireless efforts in getting so many of his 'groupies' to attend.

Marty Rhone

TOWARDS NEW THERAPIES FOR PARKINSON'S DISEASE BY UNDERSTANDING ITS NEUROINFLAMMATION

CLAIRE STEVENS

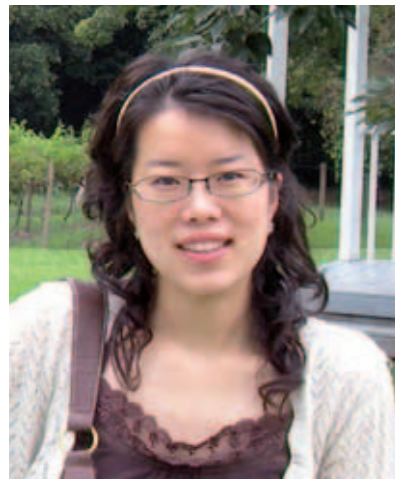


My project aims to understand what happens with age to increase the risk of developing Parkinson's disease. As age is the greatest risk factor for Parkinson's, it is important to understand how it affects the disease. My first project aims to determine if there is a difference in the amount of pathology in people of different ages with Parkinson's disease. In my first year I have looked at the affect of age on the severity of a-synuclein deposition in the brain. a-Synuclein is a protein that aggregates in brain cells and, as the disease progresses, spreads into more and more areas of the brain. I am still acquiring the data, but a preliminary assessment indicates an increase in a-synuclein deposition with increasing age. This project will be completed and submitted for publication by the end of 2010.

Now in the second year of my PhD, I am about to embark on two new and exciting studies. I will now target the immune system and ageing, as there is considerable evidence that the immune system participates in the progression of Parkinson's disease. My next study will look at immune changes in the brain and I will follow this by looking at immune changes in the blood. Combined, these studies may provide new knowledge to assist in the development of new treatments and diagnostic tools that will improve the quality of life for people living with Parkinson's.

NEUROGENESIS IN PARKINSON'S DISEASE

JIE ZHANG



The adult mammalian brain has traditionally been considered an organ with a limited capacity for self renewal and repair. However, new neurons are born in the subventricular zone (SVZ) of the lateral ventricle and the dentate gyrus (DG) of the hippocampus throughout adult life in a process called neurogenesis. There is some evidence that neurogenesis is deficient in patients with Parkinson's disease (PD), but other evidence that dopamine replacement medications stimulate neurogenesis. This project will assess the effect of both PD and dopamine replacement therapies on neurogenesis.

To assess neurogenesis, samples of the SVZ and DG were provided by the Sydney Brain Bank and prepared with protein specific markers to quantify the number of new born cells (detected by PCNA protein marker) and immature migrating cells (detected by PSA-NCAM protein marker) using computer assisted software. Differences between groups were assessed using non-parametric statistics at a p value of 0.05.

Complete data has now been obtained for the DG, and this shows that the number of PCNA and PSA-NCAM positive cells are reduced by 30-45% in PD compared with controls, with no difference between the numbers of these cells in PD with and without levodopa treatment. This decrease in new DG cell birth in PD was associated with a reduction in the volume of the hippocampus. We are currently completing the analysis on SVZ.

This work shows that neurogenesis is affected in PD. Our current data suggest that in the hippocampus (the major site for memory storage) the disease itself results in a reduction in the birth of new neurons and, over time, a loss of the replacement of neurons in this region in PD. This effect is not influenced by dopamine replacement medications. Changes in the neuronal makeup of the hippocampus over time may contribute to memory deficits over the course of the disease.

CREATION OF NEW INDUCED PLURIPOTENTIAL STEM CELL MODELS TO INVESTIGATE PARKINSON'S DISEASE

PRINCIPLE INVESTIGATOR: PROFESSOR CAROLYN M SUE



In this project, we used an exciting and new technology to create human stem cell models that will help us investigate how neurons degenerate in PD.

In 2007, Takahashi and colleagues were able to successfully create a new form of stem cell model called human iPS cells (induced pluripotent stem cells) from skin cell lines. These iPS cells had similar characteristics to human embryonic stem cells. Subsequent studies showed that these iPS cells could be successfully differentiated into dopaminergic neurons with a high level of efficiency. Thus, it became possible to create neurons from a human skin biopsy using this iPS cell methodology.

During this project, we used this new iPS technology on skin fibroblast cultures generated from affected patients with PD to create human derived stem cell models of PD. These patient-derived disease specific cell models showed characteristics of embryonic stem cells, but they also contain the cellular abnormalities that have caused PD in the donor patient. Thus, this library of newly created cell lines will allow us to more accurately investigate what happens to neurons in PD with closer relevance to humans. In future experiments, we will also be able to test whether various treatments can be used to slow down or stop the progression of PD.

THE PARKINSON'S PUZZLE: WHY DO SPECIFIC BRAIN CELLS DIE IN PARKINSON'S DISEASE?

STEFANIE REYES



Thanks to the generous support from the Parkinson's NSW PhD top up scholarship, my research has been my focus during these last few years. My project investigates why only some dopamine-producing cells within the substantia nigra die in this disorder, while other dopamine cells in this brain area survive. My work aims to identify what makes an individual cell survive or degenerate in PD and we have recently published a review paper which discussed differences between individual cells that may make them more vulnerable or more resistant to Parkinson's. Studies to date, however, have almost exclusively been done in animal brains, so it is important to understand these differences in the human brain. I have therefore been comparing the characteristics of vulnerable and resilient brain cells in the human substantia nigra, and comparing this data to what is known about these factors in the animal brain. Interestingly, I found that the concepts from animal studies on a number of factors involved in cell communication do not mark only vulnerable neurons in the human substantia nigra, and so are unlikely to determine the fate of individual cells. I am currently in the process of writing a paper on these interesting findings, comparing the data from the human and animal brain. In future work, I will examine differences in how these cells store and recycle dopamine and the relative activity of these cells, to investigate if differences in these factors influence the survival of particular cells. This work may lead to the development of new treatments that increase the resilience of brain cells to the effects of Parkinson's disease.

DOPAMINE REGULATION OF NEURON BIRTH IN PARKINSON'S DISEASE



Principal Investigator:
Professor Glenda Halliday

Co-investigators:
A/Professor Kay Double, Professor Cyndi Shannon Weickert

Postal Address:
Neuroscience Research Australia
(formerly Prince of Wales Medical
Research Institute), Hospital Road,
Randwick, NSW 2031

Project start date:
January 5, 2009

Project completion date: June 30,
2010 (note: project was postponed for
6 months after approval from PNSW,
from June 30, 2009- Dec 24 2009, as
the Research Assistant to complete
the project was away on maternity
leave for this time)

Budget Requested:
All money was used for salary, for
the essential Part Time Research
Assistant; \$47, 317.93, and the
remaining \$2, 682.07 went towards a
further salary for a Research Assistant
for 2 days a week for 1.25 months.
Priority 2 and 3 (Immunohistochemical
antibodies and consumables) were
covered by other funds.

MAIN CONCEPT OF THE PROPOSAL:

Little is known about neurogenesis (neuron birth) in Parkinson's disease (PD), but in the healthy brain, dopamine is an important endogenous factor in the regulation of neurogenesis. This project was aimed at providing an understanding of the affects of PD and its dopamine based treatments on neurogenesis, so that safe and effective ways, to potentially stimulate the birth of endogenous stem cells, may be developed.

METHODS USED:

Brain tissue assessment, of the neurons involved, is required. Formalin-fixed brain tissue, for this project, was sourced from the Sydney Brain Bank and Neuroscience Research Australia. Eight PD cases with L-dopa treatment, eight drug-naïve PD cases, and eight age-matched controls were available for the study. Serial 3 mm coronal slices of the main neurogenic zone (subventricular zone or SVZ), were sampled just adjacent to the ventricles in the brain (between 7 and 9 sections per case) and a number of 40 µm sections, cut from the top side of the 3 mm slices, taken for immunohistochemical analysis of specific markers of newly born neurons.

ASSESSMENT OF NEWLY BORN NEURONS IN THE SVZ:

The sections were processed using free floating immunoperoxidase histochemistry, with antibodies to PCNA (to identify proliferating cells) and PSA-NCAM (to identify developing and migrating neurons), and mounted onto glass slides. Detailed quantitation of the numbers of neurons was performed using Stereoinvestigator software on a computerised microscope. This involved identifying the SVZ and outlining it in each section for each case, and counting cells positive for each marker and within a random grid of counting boxes of known dimension. Cell counts were performed by researchers who did not know the diagnosis of the case. Non-parametric statistical analyses were performed to determine differences between groups at a p value <0.05.

RESULTS AND DISCUSSION:

There was no difference in the SVZ volume or the numbers of PCNA neurons between the three groups. This suggests that similar numbers of cells were being born in the brains of all controls and PD cases examined, and that PD per se does not influence neuron proliferation. This result was unexpected, as one previous study (Höglinger et al. Nat Neurosci 2004;7:726-35), assessing the density of PCNA neurons, found a decrease in their density in the SVZ in patients treated with L-dopa. However, in their animal model (rats administered MPTP to create a dopamine lesion) they did not see a decrease and actually saw an increase in PCNA cells in the SVZ after treatment with L-dopa. We did not find either a density difference or a difference in total estimated PCNA+ cell number, although we did find a non-significant increase (60±63%, p=0.46, power=0.7) in the estimated numbers of PCNA cells in patients treated with L-dopa (Control mean±SEM; 1826±555 cells, L-dopa treated PD mean; 2919±1159 cells, drug naïve PD mean; 1613±344 cells). We now need to assess the variation in dose of L-dopa to determine if this has influenced our results (those on higher doses may have more neurons than those on lower doses, which would suggest a dose threshold effect). This data, in association with the animal model data, suggests that L-dopa therapy may stimulate the birth of new neurons in the SVZ.

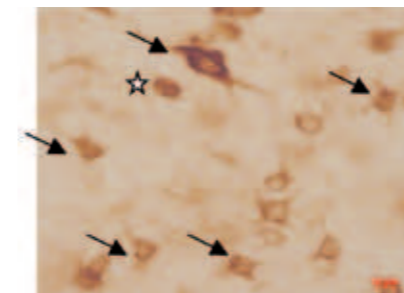


Fig 1A – migrating cells showing positive expression of PSA-NCAM, with obvious processes, marked with arrow



Fig 1B – progenitors showing positive expression of PSA-NCAM, without processes, marked with star.

For the evaluation of the PSA-NCAM labelling, it was obvious that two types of new neurons could be seen – neurons without processes (putative immature progenitors), and neurons with obvious processes (migrating neurons).

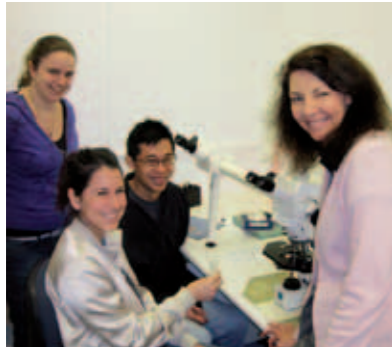
These cell types were evaluated separately. We found no difference in the numbers of PSA-NCAM progenitor neurons, although there was a similar, non-significant, increase (94±52%, p=0.25) in these neurons in patients with L-dopa treatment (Control mean±SEM; 2967±1329 cells, L-dopa treated PD mean; 5746±1534 cells, drug naïve PD mean; 3083±924 cells), as described above for PCNA neurons. In contrast, there was a significant reduction (30±9% of control values, p=0.03) in the numbers of migrating PSA-NCAM neurons in drug naïve PD patients, which was somewhat alleviated in those on L-dopa therapy (65±15% of control values, p=0.06 between PD groups)(Control mean±SEM; 1353±357 cells, L-dopa treated PD mean; 876±199 cells, drug naïve PD mean; 400±121 cells). This data suggests that PD affects the migration of new neurons from the SVZ, and we have further studies planned to assess if fewer migrating neurons are present in the SVZ of patients with PD due to lack of differentiation or due to increased migration from the SVZ.

Our results indicate that new SVZ neurons in PD may lack capacity to effectively migrate and potentially be normally incorporated into the brain. We have also found that L-dopa treatment may positively affect both the birth and migration of new neurons in the SVZ. Jie Zhang, our PhD student, will progress these studies further, and we hope to have a publication by the end of the year. This study may lead to further studies into the development of drugs that may assist with endogenous neurogenesis in PD.

Glenda Halliday
1/9/2010

THE ROLE OF COPPER IN PARKINSON'S DISEASE

ASSOCIATE PROFESSOR KAY DOUBLE, NEUROSCIENCE RESEARCH AUSTRALIA



From left to right: research assistant Veronica Cottam, PhD student Katherine Scarpin, medical student Nicholas Chen and Assoc Prof Kay Double examine changes in copper transport in the brain.

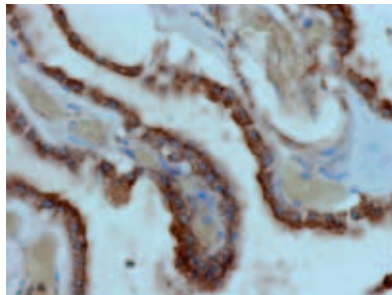


Photo taken on a microscope showing an important copper transport protein (in brown) in the human brain. This protein transports copper into cells so that it can be used by copper-dependent proteins that maintain brain cell health.

Our project looks at the role of copper in Parkinson's disease. Copper is essential for the normal function of a number of key brain proteins that maintain brain cell health and changes in brain copper levels can result in serious neurological disorders. We have recently shown that levels of copper are markedly lower in the Parkinson's disease brain, suggesting that copper-dependent proteins may not be functioning normally in this disease. We are investigating why copper is lower than normal in the parkinsonian brain and the consequences of reduced copper levels for brain cell health. Reduced brain copper levels may result from changes in the way the brain transports copper in this disorder but little is known about how copper enters brain cells in humans, or how it is transported once inside a cell. Thus, the first aim of our project is to determine how brain cells transport copper normally and if this differs in the Parkinson's brain. This will enable us to determine why copper levels are reduced in the Parkinson's brain. Reduced copper levels in the brain may affect the function of important proteins that maintain brain cell health. Therefore, our second aim is to determine the consequences of reduced levels of copper on the function of these important proteins in the Parkinson's brain.

Since receiving the Parkinson's NSW Seed Grant, our project is progressing well. We have developed methods to study some of the major proteins responsible for the uptake of copper into cells, the transport of copper within cells, and the export of copper out of cells (see photo). None of these proteins have been detected in the human brain previously. Now that our methods are developed, we will determine how healthy cells transport copper in different brain regions and if these processes change as a person ages. We will then study Parkinson's disease brains to investigate if copper transport is different in these individuals and if any changes are associated with changes in levels of brain copper. Finally we will look at the consequences of reduced copper levels in the Parkinson's brain by measuring the activity of some of the important proteins in the brain that depend on copper to test if they are functioning correctly. A better understanding of how brain copper levels are controlled, and what happens when copper levels are too low, may help us to develop new treatments for Parkinson's disease that maintain brain cell health. Key researchers on this work are PhD student Katherine Scarpin, medical student Nicholas Chen, research assistant Veronica Cottam and our collaborators Professor Julian Mercer at Deakin University, Associate Professor David Finkelstein at the Mental Health Research Institute of Victoria and Professor Glenda Halliday, Neuroscience Research Australia.

PARKINSON'S NSW RESEARCH STUDENT AWARD RECIPIENT 2008

RESEARCH UPDATE FROM NATALIE ALLEN



EXERCISE AND FALL RISK IN PARKINSON'S DISEASE

All three projects have been completed, three journal articles have been published and the final article is currently being reviewed by *Movement Disorders*. I wish to thank Parkinson's NSW for funding and supporting my studies, through both the Research Student Award and funds for project 2, as well as for valuable assistance with recruitment of participants. Special thanks also goes to all the enthusiastic people who participated in these research projects.

1. Muscle power and strength and their relationship to walking speed and falls in people with Parkinson's disease.

People with PD were shown to be 16% weaker and 22% less powerful in their leg extensor muscles than a neurologically-normal control group of the same age and gender. This study has showed that reduced leg extensor muscle power is strongly associated with reduced walking velocity and a history of multiple falls in people with PD. This is important, as many daily activities appear to depend more on muscle power than muscle strength.

2. Can support-group based exercise reduce falls risk in people with PD?

This randomised controlled trial found that the group who followed a carefully designed exercise program showed a 7% greater improvement in a falls risk score compared with the group who did not exercise, though this result was not statistically significant. The exercise group also improved compared to the control group in other measures of fall risk factors. This project informed the development of a larger, ongoing project designed to determine if the exercise program can reduce falls in people with PD.

3. Exercise and motor training for balance in people with Parkinson's disease: A systematic review with meta-analysis

This review showed that exercise and motor training can improve the performance of balance-related activities in people with Parkinson's disease. However, the effect of exercise and motor training on falls remains unclear and warrants further investigation.

SEEDED GRANT

BRYCE VISSEL
 HEAD OF RESEARCH INTO REGENERATION AND NEURAL PLASTICITY
 GARVAN INSTITUTE OF MEDICAL RESEARCH



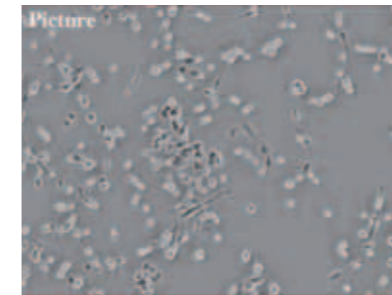
Our grant focused on studying a possible new therapeutic strategy for treating Parkinson's disease. Parkinson's disease is a serious and progressive movement disorder, characterized by tremors and difficulty with movement, among other symptoms. The disorder results from a steady death of nerve cells that produce dopamine in the brain. The loss of these nerve cells leads to steadily lower levels of dopamine in the brain. Dopamine is important for movement control; therefore lower levels of dopamine in the brain affects movement, leading to the classical Parkinson's disease symptoms. The mainstay of Parkinson's therapy currently involves the use of a drug called L-dopa. L-dopa works by replacing dopamine that is lost from the brain, and thereby helps to reduce symptoms. The problem is that there are no therapies available to date that slow disease progression. Furthermore, drugs currently used for Parkinson's including L-dopa can cause serious, undesirable side effects. There is an urgent need for new drugs that work in new ways to treat this disorder.

We believe that we have recently discovered a novel way to approach the treatment of Parkinson's disease. Our discovery shows that blocking a molecule, we have temporarily called AR10, in the brain can have therapeutic benefit in animal models of Parkinson's. We found that blocking AR10 seems to prevent the loss of neurons in a model called the MPTP Parkinson's model. Second, we have also found that, additional to its disease slowing effect, blocking AR10 can restore movement in a model called the reserpine Parkinson's model. These are truly exciting discoveries that are entirely new, with significant implications.

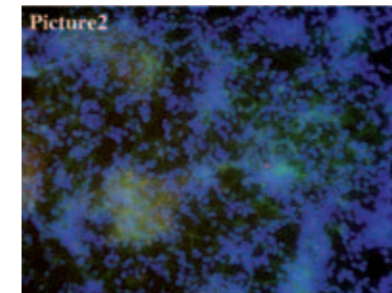
These studies are not yet complete, there is much to do and it would not be possible without Parkinson's NSW. Our studies are utilizing a modern sophisticated genetic approach (knockout mice) to establish proof of principle that blocking AR10 offers therapeutic promise. Completing the long and challenging experiments that we are currently pursuing remains a critical priority for us. In future we hope to establish that a drug that blocks AR10 offers the therapeutic possibility that we predict from our proof-of-principle studies.

INVOLVEMENT OF KYNURENINE PATHWAY IN PARKINSON'S DISEASE

ANNA ZINGER, GILLES GUILLEMIN.
 DEPARTMENT OF PHARMACOLOGY, SOMS, UNSW.



Differentiated SH-SY5Y cells exhibit the morphology of dopaminergic neurons.



Isolated human foetal neurons stained positively for TH (red) and MAP2 (green) after 3 weeks in culture.

The kynurenine pathway (KP) of tryptophan metabolism is one of the major regulatory mechanisms of the immune response. The KP is activated in several neuroinflammatory diseases and is likely to be involved in PD pathogenesis. A prolonged activation of the KP leads to production and accumulation of the potent excitotoxin quinolinic acid (QUIN). We hypothesise that the KP in human dopaminergic neurons will lead to the production of neuroprotective KP metabolites and that these neurons will be very sensitive to QUIN toxicity as we previously found in cortical neurons.

We aim to establish an *in vitro* model of human dopaminergic neurons to characterize the KP in Tyrosine Hydroxylase+(TH) neurons. We have differentiated human neuroblastoma SH-SY5Y and SK-N-SH cell lines using different sets of treatments and then characterised them for neuronal and dopaminergic markers. Both cell lines treated with retinoic acid in different serum concentrations for 5 days followed by BDNF in serum free media for few days exhibited the morphology of dopaminergic neurons. However SH-SY5Y cell line differentiated by protocol #3 (5% serum) expressed TH in higher levels comparable to other cell line and treatments (Figure1, Picture1). KP is induced in differentiated SH-SY5Y cells using INF- γ and then cells are characterised for set of 18 KP genes using quantitative PCR.

We also have isolated TH+ neurons from human foetal brain (16-20 weeks) by protocol established during this study. Primary isolated cells can be maintained in culture for up to 4 weeks and express Tyrosine Hydroxylase and neuronal marker MAP2 (Picture2). These cells are characterised for KP genes at the same manner as differentiated SH-SY5Y cells. These *in vitro* models will provide an important tool to study the involvement of QUIN in the death of TH + neurons and also the neuroprotective ability of KP inhibitors as potential therapeutic for PD.

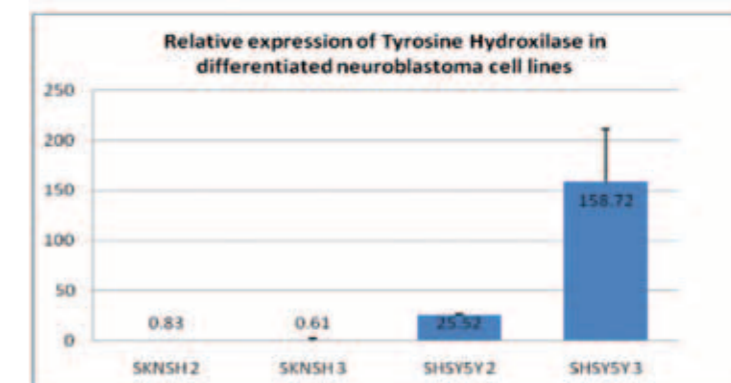


Figure 1: TH relative expression in differentiated SK-N-SH and SH-SY5Y cell lines by protocols #2 and #3. Protocol #3 with SH-SY5Y cell resulted in highest TH expression.

MARGIE LEYLAND

My husband was Mike Leyland, the elder of the well known television film producing 'Leyland Brothers'. We travelled 'All Over the Countryside' exploring the many corners of our continent and bringing the Country to television for the armchair travellers. The journey Mike had with Parkinson's was one that he did not want to take. Mike lost his battle in September 2009 after complications relating to the disease.

When a family member or friend is diagnosed with Parkinson's, there are many battles that need to be tackled. Most importantly, support, love and understanding are imperative for the sufferer, the carer and the families. It is difficult to know what the sufferer is thinking and this is often not helped by the tendency to lock up their thoughts by questioning 'why is this happening to me'. As a carer you have to be a big support and do a lot of encouraging and try your hardest to continue in a normal way. This is very difficult, as we know that the situation is not going to ease.

Another important aspect of the battle with Parkinson's is seeking out the right advice and help. My daughter, Alison, discovered the Parkinson's Clinic at Concord Hospital after she herself noticed a significant deterioration in Mike's health when we returned from a holiday in Vietnam. (The photo here is when we were in Vietnam in 2007.) This was one of the best discoveries that Mike and I could have ever found. Dr Michael Hayes, the Neurologist who attended to Mike at the clinic, was an exceptional man. He always had the time to talk to you and discuss any problems, you were never rushed away and he always gave you a lot of encouragement. On Mike's passing, Dr Hayes sent me a handwritten letter with his thoughts and this showed the true caring nature of all those at the Clinic. Even though we lived at Lake Macquarie it never worried me to drive down to Sydney for our appointments, knowing that we would receive all the advice and help we needed.



Establishing a support network is also significant in your battle with Parkinson's and those at the Concord Hospital were always there to offer their counsel and support. Sue Mercer, the Coordinator at the Clinic, is a very helpful and efficient person, always willing to help. I only recently encouraged a friend to go to Concord, as he had recently been diagnosed with Parkinson's and he could not thank me enough.

Parkinson's NSW have a wonderful support program for both carers and patients. Branches all over the State provide direct help lines, meetings and conferences, all aimed specifically at benefiting the patients and carers. Their mission to enhance the lives of those living with Parkinson's is something that I have personally experienced and I too wish to see a community free of Parkinson's.

Unfortunately I was not able to attend the Parkinson's Unity Walk this year as my wonderful daughter Alison has asked me to join her, together with her husband and children, on a holiday to France and Hong Kong. She wants me to be away for what is going to be a very hard time for me this year with Mike's birthday and a few other anniversaries. We are so lucky to have the support, love and understanding which is so important to help us get through these difficult times in our lives.

Let's hope we can all help in finding a cure for this insidious disease.

Margie Leyland
July 2010

TREASURER'S REPORT

It is with pleasure that I report to the members of Parkinson's NSW on the financial position and trading results for the year ended 30 June 2010.

Parkinson's NSW has continued in 2010 to develop its financial strength and as a result the services it offers to sufferers of Parkinson's disease. We finished the year with a surplus of \$164,510, up \$316,372 from last year.

Our income experienced strong growth for the year, up \$342,000 on the previous year but this was mainly due to a generous bequest from the estate of the Mr. Dagmar Halas late in the year. It is the nature of donations and bequests that they are variable and difficult to predict from year to year and it is for this reason that your council has a clear objective to develop alternative sources of income to create greater security for the provision of our services.

The Unity Walk continued its promising development, not only from a financial point of view (up \$50,000 in gross receipts), but also as a day that the Parkinson's community can raise awareness and goodwill. The golf day was also up \$50,000 on last year and has now developed into one of the foremost fundraising golf days in the general community.

Expenses remained under tight control during the year with a less than inflationary increase of 2.5%. Wages increased by \$103,000 during the year but this was as a result of increasing services in both the Info Line and Counselling areas. We also continued our commitment to providing 50% of the profits from the Unity Walk towards research.

In April of this year we moved office to our new location at Macquarie Hospital which resulted in one-off expenditure of \$30,000 and capital expenditure of \$50,000. It is expected that we will incur a further \$20-30,000 in capital expenditure in the coming financial year. Whilst this may appear a high commitment, given that we

moved to our previous premises a relatively short time ago, this will prove to be a major cost saver for the organization moving forward. The NSW Government has provide us with rent free facilities which will result in an on-going savings of \$70,000 per annum which gives us a payback period of approximately 18 months.

Our cash reserves improved by \$180,000 during the year, with a total of \$830,000 now held in account. Of this amount, \$220,000 are grants that we are holding in trust. This includes the Nowra Neurological Nurses project which we are managing on behalf of Parkinson's Australia which accounts for \$130,000 of this amount.

As reported last year an independent trust was established to facilitate larger donations and bequests and we are happy to report that it continues to perform strongly with returns over 25%. In the last financial year the trust provided \$90,000 for research projects and \$5,000 towards Parkinson's NSW general income. We anticipate higher allocations for the coming year.

I would take this opportunity to thank Tracy Gough, Chris Searles, Marianna Sain and Linda Luben in the administration area of Parkinson's NSW for the wonderful support that they have provided to me in the past year and for the hard work that they put in each working day. Also I would thank the Council for the support they have provided and the harmonious and hard working approach they have provided to their duties.

Finally, I would especially like to acknowledge the work of our outgoing President, John Silk. John has been the primary force in transforming Parkinson's NSW into a significant body and it has been a privilege to work alongside him.

P W Maundrell

PARKINSON'S NEW SOUTH WALES INC.
ABN 93 023 603 545

	2010 \$	2009 \$
TRADING ACCOUNT		
For the year ended 30th June, 2010		
Trading Income		
Sale of Merchandise	14,086	37,517
Prior period error	0	-20,459
Total Trading Income	14,086	17,058
Cost of Sales		
Merchandise Purchases	2,509	13,297
Publications for resale	0	636
Stocktake adjustment	-783	-4,969
	1,725	8,964
Gross Profit (Loss) from Trading	12,360	8,094

PARKINSON'S NEW SOUTH WALES INC.
ABN 93 023 603 545

	2010 \$	2009 \$
INCOME AND EXPENDITURE STATEMENT		
For the year ended 30th June, 2010		
Income		
Fundraising income	212,992	174,166
Fundraising expenses	-169,360	-109,136
	43,632	65,030
Trading Profit/Loss	12,360	8,094
Seminar/Conference Fees	3,626	68,409
Donations - In Memoriam	41,979	44,045
Donations - Support Groups	18,039	9,424
Donations - Deceased Estates	146,000	135,000
Donations - Other	604,287	292,830
Grants - Other	70,866	61,944
Interest received	32,562	48,124
Other income	151,495	64,356
Subs - Life Membership	6,968	8,227
Subs - Renewals	46,395	30,462
Subs - Organisational Membership	577	1,127
Total Income	1,178,787	837,071
Expenses		
Operating Expenses	133,723	162,259
Counselling Expenses	1,643	1,075
Member/volunteer activities	24,770	7,434
Salaries & Employment Expenses	535,288	432,294
Support Groups	16,066	14,804
Services Costs	41,764	40,328
Education Expenses	18,205	21,962
General Awareness Expenses	11,863	89,998
Bequest	3,023	2,414
Publications/resources	5,219	5,473
Research Expense	78,125	145,376
Grants	60,284	0
Parkinson's Australia	53,704	65,516
Moving Expenses	30,599	0
Total Expenses	1,014,277	988,933
Net profit (loss) attributable to the company	164,510	-151,862
Opening retained profits	515,534	667,396
Net profit (loss) attributable to the company	164,510	-151,862
Closing retained profits	680,044	515,534

PARKINSON'S NEW SOUTH WALES INC.
ABN 93 023 603 545

	2010 \$	2009 \$
DETAILED STATEMENT OF FINANCIAL POSITION		
As at 30th June, 2010		
Current Assets		
Cash Assets		
Bendigo Bank trading account	200,281	49,020
Bendigo Term Deposit	490,055	470,000
Cash on hand	250	250
Commonwealth Bank Account	18,755	9,761
Commonwealth Bank Term Deposit	15,984	15,350
Macquarie Term Deposit	104,826	102,651
	<u>830,151</u>	<u>647,031</u>
Receivables		
Dept of Health & Ageing	7,086	48,711
Debtors	23,804	15,360
Accrued expenses - Unity Walk 2010	12,103	0
Parkinsons Australia - Nowra Neurological Nurse Project	39,588	0
Sundry Debtors	14,585	9,570
Prepayments	54,529	35,769
	<u>151,695</u>	<u>109,410</u>
Inventories		
Stock on hand	15,474	16,512
	<u>15,474</u>	<u>16,512</u>
Other		
GST refund	3,686	18,159
	<u>3,686</u>	<u>18,159</u>
Total Current Assets	<u>1,001,006</u>	<u>791,113</u>
Non-Current Assets		
Property, Plant and Equipment		
Office Equipment	191,958	140,848
Less: Accumulated depreciation	-97,333	-84,133
	<u>94,625</u>	<u>56,715</u>
Total Non-Current Assets	<u>94,625</u>	<u>56,715</u>
Total Assets	<u>1,095,632</u>	<u>847,828</u>

PARKINSON'S NEW SOUTH WALES INC.
ABN 93 023 603 545

	2010 \$	2009 \$
Current Liabilities		
Payables		
Unsecured:		
Trade creditors	32,516	25,879
Employee entitlements	50,370	29,252
	<u>82,886</u>	<u>55,131</u>
Unsecured:		
Grants received held in Trust	219,482	244,407
Hornsby Support Group Nurses	5,000	0
Accrued income - Unity Walk 2010	9,210	0
Accruals	40,000	8,700
Prepaid Membership Fees	59,009	24,056
	<u>332,702</u>	<u>277,163</u>
Total Current Liabilities	<u>415,588</u>	<u>332,294</u>
Total Liabilities	<u>415,588</u>	<u>332,294</u>
Net Assets	<u>680,044</u>	<u>515,534</u>
Members' Funds		
Accumulated surplus (deficit)	515,534	667,396
Current year surplus (deficit)	164,510	-151,862
Total Members' Funds	<u>680,044</u>	<u>515,534</u>

STATEMENT OF CASH FLOWS
For the year ended 30th June, 2010

Cash Flow From Operating Activities		
Receipts from members and visitors	1,118,415	909,342
Payments to suppliers, members and employees	-916,746	-1,331,575
Interest Received	32,562	48,124
Net cash provided by (used in) operating activities	<u>234,230</u>	<u>-374,109</u>
Cash Flow From Investing Activities		
Payment for property, plant and equipment	-51,110	-30,776
Net cash provided by (used in) investing activities	<u>-51,110</u>	<u>-30,776</u>
Net increase (decrease) in cash held	183,120	-404,886
Cash at the beginning of financial year	647,031	1,051,917
Cash at the end of financial year	<u>830,151</u>	<u>647,031</u>

PARKINSON'S NEW SOUTH WALES INC.
ABN 93 023 603 545

	2010 \$	2009 \$
SEMINAR/CONFERENCE FEES		
For the year ended 30th June, 2010		
Seminar Fees	5,176	2,040
National Conf 2008 Sponsorship	0	29,363
National Conference - Registration	0	33,351
National Conference - Donation	0	1,660
National Conference 2008	0	445
Everyday Hero Subscription	-1,550	1,550
TRANSFER TO PROFIT AND LOSS ACCOUNT	<u>3,626</u>	<u>68,409</u>
DONATIONS - OTHER		
For the year ended 30th June, 2010		
Donations - Members	15,707	15,021
Donations - Corporate	17,760	15,880
Donations - Research	39,053	32,439
Donations - General	211,419	174,759
Donations - Bequests	319,549	54,731
Donations - Nurse Specialist	800	0
TRANSFER TO PROFIT AND LOSS ACCOUNT	<u>604,287</u>	<u>292,830</u>
GRANTS		
For the year ended 30th June, 2010		
Grants - General	20,866	10,444
James Kirby - SG06	0	1,500
Grants - Don Wilcox	50,000	50,000
TRANSFER TO PROFIT AND LOSS ACCOUNT	<u>70,866</u>	<u>61,944</u>
FUNDRAISING		
For the year ended 30th June, 2010		
Chinese Fundraising Dinner	0	15,000
Unity Walk - Registration	30,561	21,802
Unity Walk - Donation	10,825	173
Unity Walk - Sponsorship	161,319	137,192
Basement Charity Fundraiser	10,287	0
TRANSFER TO PROFIT AND LOSS ACCOUNT	<u>212,992</u>	<u>174,166</u>
OTHER INCOME		
For the year ended 30th June, 2010		
Community Awareness	15,000	0
Education	2,584	879
Other Income	4,910	5,553
Newsletter	3,114	455
Golf Donation/Sponsorship	115,038	45,512
Golf Day Registration	10,850	11,956
TRANSFER TO PROFIT AND LOSS ACCOUNT	<u>151,495</u>	<u>64,356</u>

PARKINSON'S NEW SOUTH WALES INC.
ABN 93 023 603 545

	2010 \$	2009 \$
OPERATING EXPENSES		
For the year ended 30th June, 2010		
Travel & Accommodation - Conferences	541	18
Telephone & Communications	9,093	8,917
Internet Expense	504	2,155
Insurance	6,994	17,943
Office Expenses	23,038	24,836
Postage	17,979	17,536
Printing	4,999	2,577
Rent	55,854	69,979
Repairs & Maintenance	4,841	1,080
Staff amenities/meetings	548	488
Membership/subscriptions	2,445	7,345
Stationery	6,888	8,036
Legal Expenses	0	1,350
TRANSFER TO PROFIT AND LOSS ACCOUNT	<u>133,723</u>	<u>162,259</u>
COUNSELLING EXPENSES		
For the year ended 30th June, 2010		
Supervision	1,200	960
Counselling Mobile	443	115
TRANSFER TO PROFIT AND LOSS ACCOUNT	<u>1,643</u>	<u>1,075</u>
MEMBER/VOLUNTEER ACTIVITIES		
For the year ended 30th June, 2010		
Annual Meeting expenses	13,499	0
Council Member expenses	1,987	733
Volunteer Exp	3,002	2,533
Council Meeting expenses	1,558	2,009
Life Members expenses	1,576	0
Travel expenses	3,149	2,158
TRANSFER TO PROFIT AND LOSS ACCOUNT	<u>24,770</u>	<u>7,434</u>
SALARIES & EMPLOYMENT EXPENSES		
For the year ended 30th June, 2010		
Wages & Salaries	334,928	292,683
Fringe Benefits Allowance	119,962	112,458
Superannuation	67,913	88,372
Leave accruals	14,342	717
Recoveries on Grants	-81,137	-106,511
Staff Training	880	1,960
Consultant/temp staff	73,818	41,708
Professional Development	0	191
Recruitment	4,583	716
TRANSFER TO PROFIT AND LOSS ACCOUNT	<u>535,288</u>	<u>432,294</u>
SUPPORT GROUPS		
For the year ended 30th June, 2010		
Support Groups - Grants	0	-152
Support Groups - Visits	4,047	6,065
Support Groups - General Exp	933	595
Support Groups - Publications	0	76
Support Groups - Leaders Meetings	11,086	8,220
TRANSFER TO PROFIT AND LOSS ACCOUNT	<u>16,066</u>	<u>14,804</u>

PARKINSON'S NEW SOUTH WALES INC.
ABN 93 023 603 545

	2010 \$	2009 \$
SERVICES COSTS		
For the year ended 30th June, 2010		
Bank Charges	1,992	2,095
Credit Card Charges	348	1,171
Accounting fees	16,330	17,720
Fees to auditor for - auditing	7,570	5,080
other services	0	0
Annual Return Costs	134	0
Depreciation	13,200	14,000
Merchant Fees	2,191	262
TRANSFER TO PROFIT AND LOSS ACCOUNT	<u>41,764</u>	<u>40,328</u>
EDUCATION EXPENSES		
For the year ended 30th June, 2010		
Newsletter	14,950	18,133
Postage for Newsletter	2,801	1,337
Website	455	2,492
TRANSFER TO PROFIT AND LOSS ACCOUNT	<u>18,205</u>	<u>21,962</u>
GENERAL AWARENESS EXPENSES		
For the year ended 30th June, 2010		
General Awareness/Expo	6,897	933
Awareness Week Exp	4,555	1,281
National Conference 2008	0	87,661
In Service Education	410	123
TRANSFER TO PROFIT AND LOSS ACCOUNT	<u>11,863</u>	<u>89,998</u>
FUNDRAISING EXPENSES		
For the year ended 30th June, 2010		
Advertising & Promotional Cost	27,766	31,530
Fundraising Expenses	14,737	24,690
2008 Unity Walk	0	32,991
Golf Day	25,113	16,903
The Ice Cream Boy	0	3,023
Unity Walk 2009	101,743	0
TRANSFER TO PROFIT AND LOSS ACCOUNT	<u>169,360</u>	<u>109,136</u>
BEQUEST		
For the year ended 30th June, 2010		
Bequest Exp	3,023	2,414
TRANSFER TO PROFIT AND LOSS ACCOUNT	<u>3,023</u>	<u>2,414</u>
PUBLICATIONS/RESOURCES		
For the year ended 30th June, 2010		
Publications for resale	0	0
Library resources	0	644
Information Material	5,219	4,829
TRANSFER TO PROFIT AND LOSS ACCOUNT	<u>5,219</u>	<u>5,473</u>
RESEARCH EXPENSE		
For the year ended 30th June, 2010		
Pager expense	318	318
Research expenses	27,807	145,058
Notre Dame Nurse Scholarship	50,000	0
TRANSFER TO PROFIT AND LOSS ACCOUNT	<u>78,125</u>	<u>145,376</u>

PARKINSON'S NEW SOUTH WALES INC.
ABN 93 023 603 545

	2010 \$	2009 \$
GRANTS		
For the year ended 30th June, 2010		
Grants	60,284	0
TRANSFER TO PROFIT AND LOSS ACCOUNT	<u>60,284</u>	<u>0</u>
PARKINSON'S AUSTRALIA		
For the year ended 30th June, 2010		
Secretariat	50,734	60,054
Parkinson's Aust Council	756	3,455
Membership Fees - Paust	1,049	2,007
CEO Meetings	1,165	0
TRANSFER TO PROFIT AND LOSS ACCOUNT	<u>53,704</u>	<u>65,516</u>
MOVING EXPENSES		
For the year ended 30th June, 2010		
Moving Expenses	30,599	0
TRANSFER TO PROFIT AND LOSS ACCOUNT	<u>30,599</u>	<u>0</u>
TRADE CREDITORS		
As at 30th June, 2010		
Bendigo Bank Credit Card	3,286	2,993
Creditors	29,229	22,885
TRANSFER TO BALANCE SHEET	<u>32,516</u>	<u>25,879</u>
GRANTS HELD IN TRUST		
As at 30th June, 2010		
Australian Chinese Charity	50	6,116
Coffs Harbour Nurses Fund	3,040	1,700
Cecelia Kilkeary	0	2,875
Traffic Lights Program	20,000	0
Tom Burns Trust for PD Nurses	37,877	39,204
CDSE Grant	0	-190
CDSE Grants	58	0
Young Mens Network	85,542	95,569
Bondi Lions Club	2,000	0
Rural & Remote Drs JT Reid Grant	0	48,000
Parkinson's NSW Trust	-1,000	0
Goulburn Nurses Fund	7,924	6,850
DASH - Perpetual	40,451	0
DASH - Dementia Community Program	-4,460	44,282
Fred P Archer Charitable Trust	28,000	0
TRANSFER TO BALANCE SHEET	<u>219,482</u>	<u>244,407</u>
SUNDRY CREDITORS - ATO GST LIABILITIES		
As at 30th June, 2010		
GST Collected	14,898	10,640
GST Paid	-18,584	-28,800
TRANSFER TO BALANCE SHEET	<u>-3,686</u>	<u>-18,159</u>
EMPLOYEES ENTITLEMENTS - PAYROLL LIABILITIES		
As at 30th June, 2010		
PAYG Withholding Payable	4,914	5,873
Superannuation Payable	7,735	0
Accrued Annual Leave	20,072	13,828
LSL Provision	17,649	9,551
TRANSFER TO BALANCE SHEET	<u>50,370</u>	<u>29,252</u>

INDEPENDENT AUDIT REPORT

SCOPE

We have audited the attached financial reports, being special purpose financial reports, for Parkinson's New South Wales Inc, comprising the Detailed Statement of Financial Position as at 30th June, 2010 and Income and Expenditure Statement and Statement of Cash Flow for the year ended on that date.

The financial statements have been prepared for the purpose of fulfilling the requirements of the Associations Incorporation Act of New South Wales. The Council is responsible for the financial report and has determined that the accounting policies used are appropriate to meet the requirements of the said Act and are appropriate to meet the needs of the members.

We have conducted an independent audit of this financial report in order to express an opinion on it to the members of Parkinson's New South Wales Inc. No opinion is expressed as to whether the accounting policies used are appropriate to meet the needs of the members. We disclaim any assumption of responsibility for any reliance on this report or on the financial report to which it relates to any person other than the members, or for any purpose other than that for which it was prepared.

COMMITTEES' RESPONSIBILITY FOR THE FINANCIAL REPORT

The Committee members are responsible for the preparation and fair presentation of the financial report and the information contained therein. This responsibility includes establishing and maintaining internal controls relevant to the preparation and fair presentation of the financial report that is free from material misstatement, whether due to fraud or error, selecting and applying appropriate accounting policies, and making accounting estimates that are reasonable in the circumstances.

AUDITOR'S RESPONSIBILITY

Our responsibility is to express an opinion on the financial report based on our audit. We conducted our audit in accordance with Australian Auditing Standards. These Auditing Standards require that we comply with relevant ethical requirements relating to audit engagements and plan and perform the audit to obtain reasonable assurance whether the financial report is free from material misstatement.

An audit involves performing procedures to obtain audit evidence about the amounts and disclosures in the financial report. The procedures selected depend on the auditor's judgment, including the assessment of the risks of material misstatement of the financial report, whether due to fraud or error. In making those risk assessments, the auditor considers internal control relevant to the entity's preparation and fair presentation of the financial report in order to design audit procedures that are appropriate in the circumstances, but not for the purpose of expressing an opinion on the effectiveness of the entity's internal control. An audit also includes evaluating the appropriateness of accounting policies used and the reasonableness of accounting estimates made by the Committee, as well as evaluating the overall presentation of the financial report.

These procedures have been undertaken to form an opinion whether, in all material respects, the financial report is presented fairly in accordance with the basis of accounting decided by the Committee, so as to present a view which is consistent with our understanding of the company's financial position, and of its performance.

We believe that the audit evidence we have obtained is sufficient and appropriate to provide a basis for our audit opinion.

AUDITOR'S OPINION

In our opinion, the financial report presents fairly, in accordance with the accounting policies decided upon by the Committee, the financial position of Parkinson's New South Wales Inc. as at 30th June, 2010 and the results of its operations for the year then ended.



Allan Dodd FCPA
Frost Crane & Co Pty Ltd
22 September, 2010

PARKINSON'S NEW SOUTH WALES INC.
ABN 93 023 603 545

LEAD AUDITOR'S INDEPENDENCE DECLARATION UNDER THE ASSOCIATIONS INCORPORATIONS ACT OF NEW SOUTH WALES

To : the Committee members of Parkinson's New South Wales Inc :

I declare that, to the best of my knowledge and belief, in relation to the audit for the financial year under review, there have been no contraventions of:

- (a) the auditor independence requirements as set out in the said Act in relation to the audit; and
- (b) any applicable code of professional conduct in relation to the audit.



Allan Dodd FCPA
Frost Crane & Co Pty Ltd
22 September, 2010

DONATIONS

26 Pty Ltd
77Sqn AVMF Social Club
Acco Australia
Robyn Adams
Toni Adams
Alastair Adamson
Cleone Addison
A Adler
Jos Agius
Ray Agland
AKA Entertainment
Albion Park Ladies Bowling Club
J. Alessi
Jacqueline Alexander
Phoebe Alexander
Graeme & Jane Alexander & family
Graeme Allen
Faye Allen
Tim Allen
John & Yvonne Almgren
Mark Amos
AMP Foundation Charitable Trust
Helene Anderson
Anonymous
Ansa Investments Pty Ltd
Con Anton
Alfred Argo
Argyle Inn Camden
Paula Argyropoulos
Elizabeth Armstrong
ES & K Arnold
Horace Arnott
Robert Arthur
Martin Ash
Warren Ashley
Carol Ashley-Wilson
Susan Asplund
A Atgemis
Bernard Atkinson
Shamsher Atwal
Jack Au
Australian Chinese Charity Foundation
Ayliffe Enterprises
Maria Aziz
Richard Babb
Betty Babister
Walter Bailey
Jackie Bailey
Robert & Primrose Baker
Karen Baldwin
Melissa Ball
Eileen Bamford
John Bamford

Bankstown Parkinson's Support Group
John Barker
Rob Barnwell
Warren Barton
G Basser
Howard Bate
Bathurst Parkinsons Support Group
Leslie Battle
Baulkham Hills (Mixed) Probus Club
Peter Baulman
Tony Bawden
Ette Bay
Barbara Beames
Alex Beaumont
John Bedwell
Daniel Been
Ken Beenie
Bega Valley Parkinson's Support Group
Yasmin Begonja
Ron Bell
Bendigo Bank Limited
Olive Bennett
Irving Benton
J Benyon
Gladys Berejikian
Kathleen Berger
P Berliner
David Berman
Janet Berry
Renata Bertram
Nigel Bertus
Nicole Betts
S Beveridge
Donald Beveridge
Bewitch Fashions
Frances Bible
Margaret Bible
Stephen Bible
Bingara Parkinson's Support Group
Pamela Binnie
Gerd Birkefeld
Noel Bishop
Selwyn Black
Helen Black
Blackheath Indoor Bowls Club
Blackheath Tennis Club
Blackmores Limited
Violet Blackstock
Amanda Blake
Ray Blizard
Blue Haven Social Club
B'nai B'rith Foundation

Boehringer Ingelheim Pty Ltd
Johanna Boland
Brian Bolland
Rae Bolotin
Adelfo & Giustina Bonanni
Bondi Lions Club
Gwen Boon
David Boreham
Min Borra
Beverley Borserio
Alex Bory
Boss Bookkeeping Services
Michael Bouletrouf
David Boulton
Derek Boulton
Brett Bowden
J Bowe
Simone Bowskill
Susan Boxall
Elizabeth Boydell
Ian Boydell
H Boyle
Sue & Jim Bradley
Peter Bradley
Veronica (Teddy) Bradley
Phil Breen
Joseph Brennan
E Brewer
Bridge Club
Alan Brindley
Easton & Linda Brodsky
Mary Broome
Beryl Brown
Harry Brown
Norman Brown
Warwick Brown
Keith Brown
Joan Brown
P Brown
Ormonde Brown
Wesley Browne
Carol Ann Browne
Ray Browning
Sue Brownsberger
Bruce Searles Consulting Pty Ltd
Mary Bryant
Kenneth Bryant
Judith Bryant
Merrilee Bryant
Wallace Budd
Lorraine Bugden
P F & T E Bull
Joyce Bunch
Carolyn Bunney
Elizabeth Burgess

Fred Burke
Robert Burke
John Burke
Bruce Burne
June Burns
M L Burrage
Ronald Butler
Bernadette Buttigieg
Rosemarie Buzinskas
Norma Byles
Bruce Byrn
A & W Byrne
Margaret Byron
Noeline Cable
Stewart Caddick
Annie Cage
John Cahill
Daniel & Barbara Cahill
Thomas Cain
Roger Caine
Hilary Caldwell
Leanne Camaggi
Neil Cameron
Ronald Cameron
John Cameron
Cameron Family Trust
Camp Breakaway
Bonnie Campbell
Lesley Campbell
Reginald Campbell
Glenn Campbell
Denis Cann
Colleen Canning
Cantarella Bros
Canterbury Leagues Club Limited
Caravousanos
Beth Card
Mervyn Cardelli
Ellie Carew
Ken Carlton
P Carmody
Carolyn Roberts Designer Gemstones
Mark Carosi
Rhonda Carpenter
Patricia Carr
Angela Carrick
Carrington Centennial Care
Peter & Melita Carstens & Family
Janice Casement
Casino Parkinsons Support Group
Julian Cass
M Cassimatis
Kathryn Castelletto
Castle Hill Support Group

Jim Cattlin
Ray & Patricia Cavenagh
B Cawthorne
CBA Traded Market Operations
Garry Cearns
Central Coast Parkinson's Support Group
S Cerniglia
Gaetano Cerniglia
Myra Chalmers
T & M Chambers
Grant and Carol Chambers
Ernest Chan
David Chan
Henry Chan
Dixon & Lisa Chan
Chan & Leung Investment Pty Ltd
Ronald Chandler
Lionel Chang
Chan's Garden Chinese Restaurant
Graeme & Gwenda Chapman
Charles R Xuereb & Co
William Charlton
Ruth Cheers
Keith Cheeseman
Po Cheng
Bill Chik
Colin Childs
Chinatown Bi-Lingual Parkinson's Support Group
Lawrence Chong
Kitty Chow
Benjamin Chow
Chris Carstens Consulting
Dorothy Christensen
Edith Christie
Linda Christison
Heather Christison
R W Christison
B Christison
J Kay Christison
Samuel Chu
Sai Chua
H Tim Chung
John & Lynne Church
Janice Churcher
Circolo Anziani - Italian Seniors
Ellen Clancy
Melissa Clark
Christine Clark
Courtney Clark OAM
Erica Clarke
Barry Clarke

Allan Clarke
Frank Clarke
Elma Clarkson
Claudios Quality Seafoods
Leila Clifford
Club Marconi
CMV Foundation
Coalfields Parkinson's Support Group
Coffs Harbour Parkinson's Support Group
Pamela Cohen
Neil Cohen
V Cohen
Dianne Colee
Clive Collins
Theo and Irene Comino
George Comino
Compass Consulting
Alex Compton
Paul Conino
John & Sharon Conner
E & J Connor
George and Carol Conomos
Patricia Cook
Alan Cook
Judith Cook
Coolamon Lions Club
Anthony Coombs
J Corlis
Corpus Christi Catholic Primary School
Joyce Coulter
Steven and Alicia Coulter
Country Womens Association of NSW
Toongabbie
Trudi Coutts
Margaret Couzens
Cowra Parkinson's Support Group
V M Cox
P N & W G Cox
Leah Craig
Wilma Creed
Jan Creswell
Crichton
Gary and Maria Criticos
Federico Crocker
Cromwell Operations
Angelo & Erenie Crones & Family
Christopher & Katrina Cujko
S Cullen
Jan Cumming
Robin & Margaret Cummins
Carolyn Curnow
Carmen Cutajar

Barbara Cuthbert
John Dabaye
G Dalla Pozza
Roger & Dianne Dampney
Keith Daniel
John Daniell-Webb
Bernard Danks
Lois Dannecker
F Danos
Jolyon Dare
Gary Dark
Audrey Dark
Enid Darrington
Robert Dartnell
Shirley Darton
David & Diane Cooper
Bricklaying Services
David, Charlie & Ava Prince
Joan Davidson
Ruth Davies
Tina Davies
Robert Davies
N Davies
S Davis
Marilyn Davis
Chris Davis
Russell Dawes
Tim de Bono
Ron De Jager
Kay De Luca
Gerrit De Vries Robbe
A Deacon
Trish Dean
Tom Dean
Raymond DeBono
L Degotardi
Delroy Fire Brigade Social Club Inc
Peter Demetre
Denham
Maxwell Dening
John Dent
Depot Beach Volunteer Rural Fire Brigade
Judith Desmarchelier
Carmelo Di Francesco & family
Giuseppe & Rosetta Di Francesco & family
Guisepe & Marinella Di Maggio
S Di Millo
Leo & Agata Di Paolo & family
Jorge Di Zio
J Diamond
Elaine Diamond
Ross Dicker

Alan Dickson
Greg Dickson
Shirley DiFonzo
Demetre Dimitropoulos
Panagiota Dimitropoulos
M Dinte
Geoff Dixon
Jonathan Dixon
Miriam Dixon
Milica Dodds
R Don
J D Donoghue
Trish Donohue
Ronald Dorrian
Jan Dowling
Margaret Downes
T & M Drane
Gordon Drummond
Dubbo Parkinson's Support Group
Margaret Duggan
Cathy Duguid
Alan Dumbleton
Scott Dumbrell
Victor Duncan
Jo-Anne Duncan
Dundas/Parramatta Parkinson's Support Group
Fiona Dunham
Joy Dunn
Dorothy Durrington
Pat Dyball
A Dykeman
A E Earl
Eastern Suburbs Parkinson's Support Group
Bruce Eaton
GT & RL Eckstein
L Edmond
Robert Edwards
Noel Egan
Catherine Eggins
Herman Eisenberg
Elders Real Estate Lambton
Robin Eliovson
John & Shirley Elliott
Ian & Yvonne Ellis
Elwyn Elphick
Barry Elson
Kathy Elton
John Engisch
Epping RSL (Sub Branch) & Community Club Ltd
Estate of the Late Olive May Murray
Eurobodalla Parkinson's Support Group
Erica Evans

DONATIONS

D H Evans
John Evans
George Evans
Geoff Evans
Mike Evans
Everyday Hero Pty Ltd
Evolution Pilates
J Fabre
Facilitate Digital
Fairfield/Liverpool
Parkinson's SG
Andrew Falconer
Jim Fanning
Vi Faure-Brac
Paul Fawkes
Hongming Fei
C & P Feros
Carmela Fichera
Russell Findlay
Roger Finlayson
Peter Finley
Finley Parkinson's Support
Group
B Fisk
J & C Fitzgerald
Romano Fois
N Foley
Vicki Fontana
Marjorie Foot
Andrea Franco
Bruce Frank
Caroline Franks
Jim Fraser
Carolle Freidman
A Frilingos
Sam Frost
Frost Crane Pty Limited
Irene Fung
Denise Fung
R & J Gage
Stephanie Gagen
Mick Gallagher
Edna Gallen
Paul & Sarah Gallo
Galston Financial Services
Ltd
W R Galvin
Diana & Audie Gamra
Ganellen Pty Ltd
James & Karen Gardner
Jan Garner
Jennifer Garvin
Elizabeth Gascoigne
Patsy Gattermeier
C Gavrilis
R & E Gayner
Georges River Lioness Club
Audrey Gerardi

B P & K M Gerrard
Elaine Gilbert
Narelle Gilby
Steven & Karen Gill
Sharon Gillette
Frank Gillis
Betty Gilmore
Ian Gilmour
Russell Gilmour
Joy Gimbert
Julie Gissing
V Glass
Marion Gledhill
Glen Severn Holden
Glenn Innes Parkinson's
Support Group
Karen Glover
Geraldine Godbold
GoFundRaise
G Goldberg
L Goldberg
Joe and Jan Golding
Margaret Goldman
Goodwin Financial Services
Sue Gordon
Pamela Gordon
Teunis Gorsel
Hans Gotthard
Goulburn Parkinson's
Support Group
Goulburn Workers Club
Veronica Gover
Judy Gower
Dan Grady
Grafton Parkinson's Support
Group
Grafton Senior Citizens
Euchre Players
Graham Judy, Kim & Tahnee
Jackson
McGregor Grant
Gillian Grant
Edward Grant
J & M Granzotto
Anthony Grasso
Karen Graves
Sandy Gray
Paul Greasley
Helen Grebert
Vivienne Green
David Green
Maurice Green
L Green
M Green
Leslie Green
Robert Green
A Green
Bob Green

Greenwich Headwear
Graeme Greenwood
Pam Griese
Griffith Parkinson's Support
Group
Jean Griffiths
Kendall Griffiths
Peter Grove
Raymond Groves
Donato Guerrera
George Guillow
Margaret Guinane
Michael Gunnell
Dasia Gutman
R & V Gwilliam
Denis Hackett
Jill Hageman
David Hain
Frank Haley
Bob Hall
Elizabeth Hall
Joan Hallett
Glenda Halliday
Carol Hand
Max Handcock
K Handley
Shirley Hanke
Shane Hanlon
Karin Hanlon
Charles Hanna
William Hannaford
Joan Hannan
John Harding-Smith
Kathryn Harle
Miriam Harman
Bruce Harper
Raymond Harrington
Adrian Harrington
Blair & Melinda Harrington
Adrain Harrington
Katrina Harrington
Gail Harris
Leone Harris
Yvonne Harris
Beryl Harris
Wendy Harrison
Brendan Hartnett
Louis Harwin
John Hassett
Adam Hatch
Juanita Hattersley
Hawaiian Airlines
Ian Hawes
Hawkesbury Parkinson's
Support Group
Cornelia Hayek
M Hayes

Dorothy Healey
Kel & Jill Healy
Joyce Hedlund
Mark Heffernan
Vera Heil
Patricia Heilman
Bill Henderson
Peter Grove
Jasmine Henderson
Ian Hendry
James Hennessy
Frances Hennessy
Stirling Henry
Robert & Helen Herculson
V Hibbard
Jean Hickson
Catherine Higgins
Peter Hilder
William & Qesta Hill
Sheryl Hillier
Carmel Hillier
Anne Hillman
C Hitchen
Hitech Property
Maintenance Service
S Ho
Elaine Hodge
David Hodgkinson
Margaret Hogan
Susanne Hogan
Loyla Hogarth
Jane Holland
Cec Holland
Alf Hollands
Elaine Hollis
Donna Holmes
June Hookham
Mary Hopson
L Hor
Phyllis Horne
Hornsby/Kuring-gai
Parkinson's Support Group
Saras Ho-Shon
Noel Hosking
Henry Hourihan
Fleur Hourihan
E & B Howard
Fiona Ruth Howard
Donald Howe
K Howe
Robert Howe
Arthur Hubbard
Hudson
James Hughes
Margaret Hunt
Diane Hunter
A Hurst III
Paul Hutchins

John Idotta
Ludwick Ihnat
Ron Ihnen
Illawarra North Parkinson's
Support Group
Edward Ingall
Bill Inglis
Intouch
B & M Ioannou
Shelly Ip
Stella Ip
IPDA
Stephan Ippdito
Shaun Ireland
Adrian & Patricia Ireland
Joan Isaksen
J & K Israel
C Israel
Ivy Rose Tuesday Club
Bethyl Jackett
Katie Jackett
Irene Jackson
P & S Jacobson
Jaguar Land Rover Australia
Miroslav Jakovljevic*
M Jarrett
D & A Jeans
Derek & Pipina Jenkins
Jenkins Family
Elfriede Johnson
J Jolly
Alan Jolly
Denise Jollye
Brian Jones
Sandra Jones
Joyce Jones
Zoli Jordan
Damian Judge
Amanda Judge
Dorothy Juknaitis
Margaret Jupp
Jack Kahabka
Max Kahn
Kaiser 23 Pty Ltd
Steve & Effie Kalenderidis &
Family
A Kalliris
Sophia Kalliris
Kevin Kam
Duriye Kandemir
L Karpin
Mary Katralis
Patricia Kearns
JA and Mrs B Keen
Mark & Tola Keene
Judith Keller
Geoff Kelly

Daphne Kemmis
Helen & Colin Kennedy
Lyn Kennedy
Anne Kermode
Helen Kerr
Paula Kerr
Diane Kiernan
S Kimpton
Janice King
Joy King
John King
Peter King
David King
Elaine King
Craig Kitch
George & Katina Kitromilides
D & N Kladis
Nick Klafas
Christopher Kloster
Norma Knight
Kate Knight
Anne Knowles
Margaret Knox
Lucy Kocsis
A Kokkinis
Zoe Kominatos
Ann Kondilios
Michael and Melissa
Kondilios
V Koupianskey
Kathy Kovac
Bernie & Marcia Kresner
Horst Krietsch
M Krijnen
Ellin Krinsly
John Krslovic
Maria La Spina
Lady Anne Funerals
Edwin Lai
Lawrence Lai
K Lai
Lawrence Lai
Nancy Lam
R Lamble
Harry Lambrou
Bruce Lampe
Katie Lange
Ann Langton
Eve Laron
Peter Lau
Jenny Launt
Laurieton Haven Craft
Anita Lawrence
Tom Lawson
Pat Lawson
Aris Lazaridis
Noel Le Huray

Leading Edge Computers
M Leake
Amen Lee
Doris Lee
Jane Lee
Joan Lee
Judith Lee
Geoff Leech
Ian Lees
M I Lehrle
Leichhardt Public School
Leighton Holdings Limited
Les Watkins & Son Pty Ltd
David Lesnie
Peter Leung
Halina Leung
Fiona Leung
Ian Lewis
Janice Lewis
H Lewis
Margie Leyland
Abraham Lieberman
Sepi & Hilda Liebeskind
Antigoni Likoudis
Beralda Lilli
Amy Lim
Choon Kean Lim
John Lincoln
Lind Golf
H J Lindsay
Lioness Club of Glenn Innes
Lioness Club of Rutherford
Lioness Club of the
Sutherland Shire
Lioness Club of Toronto
Lions Club of Epping
Eastwood
Lions Club of Bondi Inc.
Lions Club of City of
Hurstville Inc
Lions Club of Grenfell Inc
Lions Club of Parramatta Inc
Lions Club of Tumut Inc
Lions Club of West Pennant
Hills/Cherrybrook
Lions Club of Wyoming
Lions District 201 N-4
Nancy Liu
Anna Lloyd-Thomas
Peter Lo
Sherry Lo
Henry & Odette Lobelson
Robert Locke
William Locke
Doris Lockrey
Cecille Logothetis
F Long
Dorothy Long

Keith Loosemore
Helen Lorne-Smith
Lower North Shore
Parkinson's Support Group
A Lowy
LS Piddington & Sons Pty
Ltd
Margaret Lui
Jan Luikens
Andrew Lund
J & M Lyons
M & C Saatchi
Macarthur Parkinson's
Support Group
John MacCulloch
LK & DD Maciver
Carmel Mackin
Ann Macpherson
Macquarie Bank Foundation
Macquarie Group
Foundation
John & Debbie Maddocks
Shane Magennis
Brian & Margaret Maher
Marjorie Maidment
Ante Males
George and Maria Mallos
Roger Malouf
Heather Manning
J Manning
Mannings Funeral Home
Bruno Mara
Caterina Marco
Domenic Marco
Attilio Marinangeli
Mabel Marks
Marie Marriott
Caroline Marsden
Cyril Marshall
Norman Marshall
D Martin
Ella Martin
Martin Place Chambers
Ray & Richard Martyn
Mason Family
J Matis
William Matthes
David Matthews
Pam Matthews
Ruth Matthews
Phillip Maundrell
Andrew and Eli Mavromatis
Mark Mawby
Ian Maybin
Helen Maynes
P McBurney
Karen McCarroll
B McClean

DONATIONS

Hugh McColl
 Brendan McConnell
 Margaret McCullough
 S R McCullum
 C McDonald
 Robert McDonald
 George McDonald
 Jim McDougall
 Yvonne McFarlane
 Bernard McGrath
 John McGregor
 Duncan McInnes
 John McInnes
 Geoff McIntosh
 Donald McKay
 Joyce McLean
 W McLean
 Jennifer McLeod
 Stephen McMillan
 Pam McMillan
 D R McMurray
 Loretta McNair
 L McNamarr
 Rob McNeill
 Vicki McPhail
 Peter McPherson
 Medtronic Australia
 PJ & MJ Meers
 John Melano
 Roberto Mendoza
 Judith Menzies
 John Meredith-Jones
 Marjorie Merrill
 Tony & Phylina Messina
 Chris Miesch
 Milkwood Permaculture
 Joshua Milston
 Alan Milston
 David & Jeanette Milston
 Milton Ulladulla Funeral Services
 Elizabeth Mindzosa
 Janice Minnis
 Lisa Miscamble
 Daphne Missen
 Melaney Mitchell
 John Mitchell
 Berndatte Mitchell
 M S Mitchell
 Toulia Mitchell-Stamp
 John Mleczko
 Geoff Monk
 Bart Moonen
 Tony Mooney
 David Moore
 Jens Moreitz
 Kay Morgan

Bruce & Rosemary Morris
 Fiona Morris
 John Morrison
 A Morrissey
 Gail Moses
 Glenn Moss
 Janice Mossfield
 Ross Motbey
 Bill Mott
 Doreen Moulos
 Patrick George Mowle
 Mr & Mrs Harry & Kathleen Quo & Family
 Mrs H Wells and P & V Veneris
 Lesley Muir
 E Mullan
 Austin Mumme
 Rod & Genny Munro
 Graham Murphy
 Bruce Murray
 Ken Musznig
 Nambucca Valley Parkinson's Support Group
 Colin Nancarrow
 Narrabeen North Public School
 Narrabri Parkinson's Support Group
 National Seniors Australia
 John Natoli
 Filippo Navarra
 Prue Neidorf
 Phil Nelson
 Jackie Ness
 John Ness
 Adrian Ness
 Rob Ness
 Ross Neuendorf
 Iris Neuendorf
 Newcastle Parkinson's Support Group
 Rosalie Newton
 Ray Newton
 Newtown AutoOne
 Nexus Business Partners
 Rosanna Ng
 Jan Noake
 Andrew Noble
 Barbara Nolan
 Emily Norman
 Les Norris
 North Coast Area Health Service
 D & E Northam
 Northern Rivers Parkinson's Support Group
 Novartis Pharmaceuticals Australia Pty Ltd

Northern Rivers Junior Rigby League Football Club
 NSW Health Department
 NTITE
 Audrey Nutman
 O.D.S.A.
 N Obeid
 Colleen O'Brien
 Michael O'Connor
 Gillian (Gill) O'Connor
 Tracey O'Connor
 Debbie Offner
 Ognis Pty Ltd
 Theresa O'Hagan
 Wendy Oldmeadow
 Miriam Oliver
 John Oliver
 Helen O'Loughlin
 Marika O'Neill
 Stacey O'Neill
 Peter Ong
 Orange Parkinson's Support Group
 Allan Poole
 Jan Osborn
 Dorothy Osborne
 Geoffrey Ottewill
 Annette Owen
 Amy Oyoung
 Merle Pallot
 John Palmer
 Spiro Pandelakis
 Pangaea Resources
 Vito & Anne Panzarino
 Lina Panzarino
 Vince Papa
 Cristina Paradiso
 Andrew Pardoe
 June Parker
 Parkes Parkinson's Support Group
 Parkinson's Association of WA
 Parkinson's Australia
 Pathways Australia
 Isabel Paton
 Alice Paton
 Robyn Paul
 John Peachey
 Elaine Pearson
 Peats Ridge District CWA
 Bruce Peel
 Mathew Pendergast
 Peoplebank Australia Pty Ltd
 Eugene Percharowicz
 Perpetual Limited
 Tony & Gina Perri
 Yotta Peshos
 Beryn Petersen

Joseph Phelan
 Phyllis, Susan & Diane Philbrook
 Fred Phillips
 Arthur E Phillips
 Russell Phillips
 Keith & Catherine Phillips
 Pamela Philpott
 Narelle Phipps
 Chris Pickering
 Ronald Pickford
 Dot Pierzchalska
 Elizabeth Pirez
 David Pirnie
 Sharon Pitt
 Pittwater/Warringah Parkinson's Support Group
 Jackie Plummer
 Tom Pollard
 Cindy Pollard
 Beryl Pollock
 Ron Pollock & family
 Allan Poole
 Elizabeth Pooley
 A and P Pooley
 Beth Pooley
 Philip Poon
 W & J Pope
 Port Macquarie Parkinson's Support Group
 Port Macquarie RSL - Panthers
 Len Porter
 G & MD Porter
 F Pratt
 Tony Pratt
 Z Prdjan
 G Preneas
 Inge Preuss
 Douglas Price
 Debbie Priest
 Glenys Prince
 J Prineas
 I Prior
 Doreen Pritchard
 Basil & Maria Privitera
 WJ & CE Proffitt
 Carol Provan
 Matthew Prowse
 John Psaltis
 Kos and Nina Psaltis
 Teresa Puglia
 Kimpton Purser
 Mary Pye
 Greg Pynt
 Qantas Airways Limited
 Enid Quinlan

Quirindi Parkinson's Support Group
 Hanne Raad
 RACI Pharmaceutical Science Group
 Orazio Raciti
 Gwen Radke
 Anita Radok
 Donald Raffell
 Leila Ramadan
 Sue Rance
 Philip Rance
 E & J Rapee
 Steve Rath
 Glenda Rawlinson
 Brian Rawlinson
 John Read
 Leigh & Lynne Reading
 Doreen Readwin
 Rachel Rees-Scott
 Regiti Pty Ltd
 Regs Constructions
 Henry Reid
 H Reid
 Gordon Renneberg
 Narelle Reynolds
 Marty Rhone
 Thelma Rice
 Norman Richards
 Bob Richardson
 Richardson & Wrench Commercial Eastern Suburbs
 Richardson and Wrench
 Judith Riches
 Louise Rickards
 Rider Levett Bucknall NSW Pty Ltd
 Jann Ridley
 Julie Riley
 S Riley
 Karl Ritar
 Ritchies Stores
 RoarEnergy Pty Ltd
 E H Roberts
 Ian & Maureen Robertson
 Sally Robertson
 Scott & Margaret Robertson
 Joan Robinson
 Peter Robinson
 Denyse Rockey
 Beryl Ross
 Barry Ross
 Noel & Rae Rosten
 Rotary Club of Wagga Wagga Inc
 Rotary Club of Wellington
 Lloyd Rothwell

Royal NSW Bowling Association Inc
 Noeline Rozanc
 RSL Lifecare Ltd
 Jim Rudd
 Eileen Ruddiman
 Mary Rudolph
 K Russell
 John Russell
 Janice Russell
 Elinor Russell
 R N & B M Rutherford
 J Rutherford
 Helen Elizabeth Ryan
 K Ryan
 Tom & Ann Ryan
 Joyce Ryder
 Diana Rynkiewicz
 Angelo & Mirjon S
 Marianna Sain
 Kohar Sakaian
 Manfred Salamon
 S & W Salemi
 Louise Samer
 David Samer
 Michael Sampson
 V Sandeman
 J Sanderson
 Warren Saunders
 Trevor Saunders
 Helen Saville
 Peter Saxby
 Thomas Scahill
 Jill & Ralph Scheetz & Hunt
 Gisella Scheinberg
 Colin & Helen Scherrenberg & Family
 Maria Schiller
 Gundhilde Schocher
 Schoson Pty Ltd
 Leslie Schroder
 Julia Schultz
 Agnes Seemann
 P Selden
 Ruth Selmes
 Gabo Seregi
 Helen Sham-Ho
 Trish & John Shand
 Daniela Shannon
 R Sharp
 David Sharp
 R B Sharp
 Margaret Sharp
 Margaret Sharp
 Reginald Sharp
 P Shea
 Christine Sheeley

Robb Sheerman
 Ross Shepherd
 Nita Sheppeard
 D Shillington
 Shoalhaven Parkinson's Support Group
 Margaret Short
 Eileen Shotton
 Urs Sieber
 John Silk
 Sue Silversmith
 Margot Simington
 Ginette Simpson
 John Simpson
 Andrew Simpson
 Gillian Simpson
 Rita Sinn
 Erna Sitku
 Siva
 Robert Skelton
 James Slattery
 Neil Sligar
 Ann Smallmon
 Smartline Personal Mortgage Advisor
 Scott Smiles
 Joseph Smith
 Roslyn Smith
 David & Joyce Smith
 Judith Smith
 Margaret & Ted Smith
 Terence Smith
 Leonard Smith
 Robert Smythe
 June Snedden
 Barry Snowball
 Gabriel So
 G Sofios
 Mick Sofios and family
 Soho Financial Services
 R Soliman
 P Solomon
 Eleonore Solomon
 Jonathan Solomon
 David Solomon
 P Solomon
 Betty Solomon
 Mehul Somaiya
 Peter Sommer
 G & J Sotinpoulos
 Southern Highlands Parkinson's Support Group
 Betty Sparks
 Keiran Speed
 Shirley Spencer
 Ben Sprange
 David Spruce
 Steve Spyrou

St Catherine's Friendship Club
 St George Hospital Physiotherapy Dept
 St George/Sutherland Parkinson's Support Group
 St Mary's Villa Nursing Home
 Connie Stackman
 Debra Stacpoole
 Stan Crapp Funerals Pty Ltd
 Walter Steller
 Peter Stephenson
 Barbara Stern
 Andrew Stevens
 Eileen Stevenson
 George Stevenson
 Robyn Stewart
 Ian Stewart
 Lois Stewart
 Stockland Pty Ltd
 Jennifer Stone & Family
 Norman & Helen Stott
 Beryl Streatfeild
 Owen Streatfeild
 Reg Streifler
 Glen & Bill Stringer
 A Strykovski
 Margaret Stubbs
 Tricia Stubbs
 Phil Sturt
 Success Communications Pty Ltd
 Tin Wai Sum
 Richard Sumich
 Jeanette Sutherland
 Peta Sutherland
 Jenny Swain
 John Swan
 Judith Sweetnam
 Sydney 88 (District 201N5) Inc
 Sydney Airport Corporation Limited
 Sydney Fund Managers Limited
 Sydney Markets Limited
 Stephen Symonds
 J Symonds
 Francene Symonds
 Betty Symonds
 Michael and Ann Taberner
 Alice Tai
 Aurora Tam
 Gail Tams
 Tamworth Parkinson's Support Group
 Boon Tan
 Philip Tang
 Julie Tang

DONATIONS

Yue Sum Tang
 Amelia Tapner
 Andy Tayler
 Barbara Taylor
 Robert Teagle
 Ruby Teng
 Terry McGlinchey Sales P/L
 Janey Tham
 The Collins Family
 The Duggan Family
 The Estate of Laurel Merle Deane
 The James N Kirby Foundation
 The Lions Club of Lugarno Inc
 The Pharmacy Guild of Australia
 The Rotary Club of Strathfield
 The Schriever family
 The Souris Family
 The Whitton Family Trust
 The Wollongong Doll Club Inc
 Kyi Thein
 THLIA
 Patricia Thomas
 Reginald Thomas
 Christine Thompson
 Katie Thornton
 Mavis Thorpe
 Joan Todd
 Ludmilla Tokmakoff
 Tom Tolhurst
 Tom & Vera Dimitropoulos & Bessie Parthenios
 Tomaree Peninsular Parkinson's Support Group
 Ian Tompson
 Graeme Tosh
 Total Physio Centres
 Tourism Asset Holdings Limited
 William Townsend
 Paolo Tramonte
 Tina & Carol Travaglini
 Guy & Therese Treffiletti
 Vincent & Anna Treffiletti
 Sam & Dina Treffiletti & family
 Rosario Treffiletti & Family
 Trevor Lee & Son Funeral Directors
 J H & MD Trevor-Jones
 Frank & Joyce Tropiano
 Jackie Troughton
 Trust Company Limited
 Patricia Try

Victor Tsang
 Odie Tscherne
 Sunny Tse
 Shirley Tse
 Tsim Pang Lavender Kam Tuen
 Raymond Tsong
 Peter Tsui
 TTA
 Tumut Racecourse Reserve Trust
 V Tunbridge
 Geoff Turnbull
 Kimberly Turner
 Tweed Heads Parkinson's Support Group
 Philip Twigg
 E Tyson
 Tyson and Chan Families
 U3A History Class
 Ulladulla Parkinson's Support Group
 June Underwood
 United Way Sydney
 B & K Valanidas
 Valhalla Village Craft Group
 Valley Community Arts
 J Vardanega
 Peter Vassiliou
 P Vassiliou
 Geri Vaughan
 Christian Vaughan
 John Vaughan
 Michael & Lucy Vecchio & family
 Adrianus Veenhuis
 JS & H Velik
 G Venardos
 Robyn Versluis
 Caroline Vickery
 Ronald Vickery
 J Vigo
 G Visman
 Visy Board Smithfield
 M & M Vrontas
 VTI Gym
 Alan Waddell
 Margaret Waddes
 Josie Wade
 Wagga Wagga Parkinson's Support Group
 Michel Wagner
 G Waite
 Peck Huan Waldon
 Allan Walker
 Robyne Waller
 Wallis Plains Lodge No 4
 Walmsley

Norm Walsh
 H F Ward
 Lynette Ward & Family
 Brian & Susan Warne
 Noel & Jan Warr
 Warringah Mall Community Club
 Gladys Warwick
 Kaye Watkins
 Deanne Watson
 Watson Erskine & Co Pty Ltd
 Nori Watts
 Kathryn Watts
 Geoffrey Waugh
 Waverley Historical Society
 Sandra Way
 Justin Weaver
 Glenda Weaving
 K Webb
 Marjorie Webb
 Peg Webster
 May Weddell
 Rick Wegner
 Richard Weinstein
 Su Lin Weller
 Joy Wellington
 Wellington Motorcyclists
 Peter Wells
 Curves West Ryde
 M Westoby
 Julie Weston
 Westpac Banking
 Westpac Retired Officers' Club - Central Coast Branch
 Carly Westwood
 Gwen Whatson
 Whelan Investments Pty Limited
 Jean Whillock
 Judith Whitby
 Jerry White
 Noel White
 Anthony White
 Maureen White
 Brian White
 G White
 Maxine White
 Alison Whittle
 Ann Whyte
 Ron Willard
 Donald Willcox
 Craig Williams
 Judith Williams
 K Williamson
 Marie Williamson
 Robert Willson
 Jacqueline Wilsher
 Shirley Wilson

Pamela Wilson
 Joan Winney
 Judy Winning
 Ian Wiseman
 Peter Wong
 Gary Wong
 Christine Wong
 Chun Sun Wong
 Malcolm Wong
 Peter Wong
 Alexander Woo
 Frank Woo
 Frank Woodgate
 Richard Worsley
 Peter and Carole Wortley
 Jackie Wotton
 M Wright
 Stephanie Wright
 Maureen Wright
 Rosa Wright
 Mark Wright
 WT Malouf Pty Ltd
 Clyde Wunderwald
 Geri Wynen
 Yamba Parkinson's Support Group
 T Yan
 Kath Yanniotis
 Yass Parkinson's Support Group
 Rukshana Yates
 Dianne Yates
 Wilkin & Felicity Yau
 Yeaman
 Saw Yeap
 Saw Yeoh
 George & Valerie Yeoh
 Fred & Pow Li Yeoh
 Robert Yeoh
 David Yin
 Louise Young
 Frank & Bette Young
 Anne Young
 Sydney Young
 Young On-set Parkinson's Support Group
 James Yu
 Christina Yu
 Aster Yuen
 Doris Yum
 Terry Zadro
 Vera Zammit
 Zappia Bro Pty Ltd
 Mark Zatorski
 Ziros

DONORS, SPONSORS AND SUPPORTERS

Bendigo Bank
 Novartis
 Australian Senior.com
 2GB
 Hawaiian Airlines
 Hawaii Tourism
 Outrigger Luana Waikiki
 Great Southern Railways
 Financial Management Solutions
 Macquarie Bank Foundation
 AMP Foundation
 The Trust Company
 Boehringer Ingelheim
 Artisse Organic
 Intouch Direct
 Ben Hur Arena Spectacular
 ANZ Stadium
 Novotel Sydney Olympic Park
 Clubs NSW
 KENO
 Sydney Olympic Park Authority
 Lions Clubs
 The Pharmacy Guild of Australia
 Battery World
 Sydney Markets
 Fit4It Health and Fitness
 Sydney Airports Corporation
 Cromwell
 Geoff Dixon
 Argyle Inn
 Qantas
 M & C Saatchi
 Leighton Holdings
 Rockpool/Vittoria Coffee
 Facilitate Digital
 Banjo Media
 Canterbury Bulldogs
 David Samer
 Steve Zappia
 Smartline Personal Mortgage Advisers

Sydney Fish Markets
 Phil Maundrell
 Greg Pynt
 Leigh Reading
 Goulburn Support Group
 Rob McNeil
 John Silk
 People Bank
 Watson Erskine & Co
 Empire Maintenance Services
 Jan K – Pictures on Film Productions
 David Berman
 Peter Wong
 John Hassett
 Tooheys
 Schweppes
 Vince Sorrenti
 Casella Wines
 John Ness
 The Sun Herald
 2CH
 Joanne Mills
 My Future Lies
 Hills District Pipe Band
 Stairwell to Heaven
 Friends of Parkinson's NSW
 Friends of Parkinson's
 Friends of Parkinson's Australia
 Cafe2u - Joanne and Garry Cousens
 You Pizza
 K & A Catering
 Amsterdam Poffertjes Pty Ltd
 Sydney Ice Cream & Catering Service
 Fiona Shanley Air Brushed Tattoo
 One Eyed Jacks
 Leone Harris
 The Hon. John Robertson MLC,
 Minister for Transport
 State Transit Authority NSW



PARKINSON'S NSW INC

